

MP 50

new

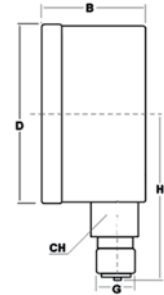


Vuotometri a polmone bassa pressione

Vacuum casing gauges
Vakuummeter

| Codice/Code | Ø | Scala Range | Attacco" Connection" | Precision Accuracy | ☑ |
|---------------|----|-------------|----------------------|--------------------|---|
| MP5063141000R | 63 | -1 ÷ 0 | G1/4 | CL.1.6 | 1 |
| MP5063140600R | 63 | -6 ÷ 0 | G1/4 | CL.1.6 | 1 |
| MP5063140400R | 63 | -4 ÷ 0 | G1/4 | CL.1.6 | 1 |
| MP5063140250R | 63 | -250 ÷ 0 | G1/4 | CL.1.6 | 1 |
| MP5063140100R | 63 | -100 ÷ 0 | G1/4 | CL.1.6 | 1 |

| Ø | B | D | H | G" | CH |
|----|----|----|------|------|----|
| 63 | 43 | 65 | 32.5 | G1/4 | 14 |



MP 52

new

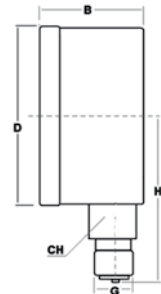


Manometri a polmone bassa pressione

Casing gauge
Manometer

| Codice/Code | Ø | Scala Range | Attacco" Connection" | Precision Accuracy | ☑ |
|---------------|----|-------------|----------------------|--------------------|---|
| MP5263140040R | 63 | 0 ÷ 40 | G1/4 | CL.1.6 | 1 |
| MP5263140060R | 63 | 0 ÷ 60 | G1/4 | CL.1.6 | 1 |
| MP5263140100R | 63 | 0 ÷ 100 | G1/4 | CL.1.6 | 1 |
| MP5263140160R | 63 | 0 ÷ 160 | G1/4 | CL.1.6 | 1 |
| MP5263140250R | 63 | 0 ÷ 250 | G1/4 | CL.1.6 | 1 |
| MP5263140400R | 63 | 0 ÷ 400 | G1/4 | CL.1.6 | 1 |
| MP5263140600R | 63 | 0 ÷ 600 | G1/4 | CL.1.6 | 1 |
| MP5263141000R | 63 | 0 ÷ 1000 | G1/4 | CL.1.6 | 1 |

| Ø | B | D | H | G" | CH |
|----|----|----|------|------|----|
| 63 | 43 | 65 | 32.5 | G1/4 | 14 |



Manometri e vuotometri cassa metallica

Gauges and vacuum gauges steel case

Manometer und Vakuummeter Stahl Gehäuse

Dati tecnici manometri a secco attacco posteriore (serie MN60)

Gauges center back connection technical data (MN60 series)

Technischen Daten der Manometer zuruck Angriff (Serie MN60)

Applicazioni

Per aria o acqua adatti a tutti gli impieghi dove non ci sono agenti corrosivi.
Pneumatica, idraulica, condizionamento, medicali.

Applications

Suitable for all process gaseous and liquid don't attack copper alloy parts. Pneumatics, Heating, ventilation, air-conditioning, Medical engineering.

Anwendungen

Für Luft oder Wasser geeignet für alle Anwendungen, bei denen es ätzend.
Pneumatik, Hydraulik, Klimaanlage, medical.

Descrizione

Manometro costruito secondo Norme UNI EN 837.1 Cassa Metallica Verniciata NERA IP55 dn 40 - 50 - 63 mm. Trasparente in Plexiglass. Perno e movimento in OTTONE attacco POSTERIORE (ISO 228 - ISO 7/1). Quadrante in alluminio fondo bianco scala BAR nera e PSI rossa (doppia scala esclusi mano vuotometri). Classe di precisione 2,5 - 1,6% Lancetta in Alluminio.

Description

Pressure gauge made according UNI EN 837.1 norms BLACK steel case dial 40 - 50 - 63 mm.
BRASS movement and pivot BACK (ISO 228 - ISO 7/1) connection. Aluminum dial white background black BAR scale and red PSI one (double scale except compound gauge). Accuracy 2.5 - 1.6% - Aluminum index.

Beschreibung

Gebaut nach UNI EN 837.1, Bargeld Metallica SCHWARZ lackiert IP55 dn 40 - 50 - 63 mm. Transparent Plexiglas. Stift und Bewegung in MESSING. Angriff ZURÜCK (ISO 228 - ISO 7/1). Wählen Sie aus Aluminium unten, Maßstab BAR schwarz und rot PSI (zwei Skalen Vakuummeter ausgeschlossen). Genauigkeitsklasse 2,5 auf 1,6% - Hand aus Aluminium.

Esercizio

Temperatura d'esercizio -10 / +60 °C
Sovrappressione NON AMMESSA

Working

Operating temperature +14 / +140 °F
Overpressure NOT ADMITTED

Betriebs

Betriebstemperatur -10 / +60 °C
Überdruck NICHT ERLAUBT

Varianti

Scale Normalizzate: Vuotometro -1 / 0 Bar+CmHg;
Manovuotometro -1+0,6; -1+1,5; -1+3; -1+5; -1+9; -1+15 solo Bar; 0,6; 1; 1,6; 2,5; 4; 6; 10; 12; 16; 25; 40; 60; 100; 160; 250; 315; 400 Bar + Psi

Variants

Normalized scale: gauge compound -1 / 0 Bar+CmHg;
Water pressure gauge -1+0,6; -1+1,5; -1+3; -1+5; -1+9; -1+15 solo Bar; 0,6; 1; 1,6; 2,5; 4; 6; 10; 12; 16; 25; 40; 60; 100; 160; 250; 315; 400 Bar + Psi

Varianten

Maßstab normalisierten Vakuummeter -1 / 0 Bar+CmHg;
Mano- Vakuummeter -1+0,6; -1+1,5; -1+3; -1+5; -1+9; -1+15 nur bar; 0,6; 1; 1,6; 2,5; 4; 6; 10; 12; 16; 25; 40; 60; 100; 160; 250; 315; 400 Bar + Psi

Opzioni prodotto

Filetto NPT ANSI B.1.20.1, Cassa Inox AISI 304 o cromata, Sgrassatura uso ossigeno, scale e/o attacchi personalizzati, loghi, settori colorati, lancetta rossa ISPEL di riferimento, saldatura forte per alte temperature.

Product options

NPT ANSI B.1.20.1 thread, Clean for oxygen service, customize range, scale or logo; Colored sector, red index, welding for high temperature.

Produkt-Optionen

NPR ANSI B.1.20.1 Gewinde, Edelstahl AISI 304 bar oder Chrom oder Entfetten verwendet Sauerstoff, Treppen und / oder Anhänge individuelle Logos, Felder rot gefärbt Hand ISPEL, starke Schweißen für Hochtemperaturanwendungen.

MN 60

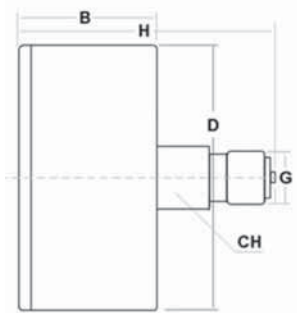


Manometri a secco attacco posteriore

Gauges center back connection
Manometer zuruck Angriff

| Code/Code | Ø | Scala (bar) Range | Attacco" Connection" | Precisione Accuracy | 📦 |
|--------------|----|----------------------|-------------------------|------------------------|---|
| MN604018099P | 40 | -1 ÷ 0 | R1/8 | CL2.5 | 1 |
| MN604018001P | 40 | 0 ÷ 1 | R1/8 | CL2.5 | 1 |
| MN604018106P | 40 | 0 ÷ 1.6 | R1/8 | CL2.5 | 1 |
| MN604018205P | 40 | 0 ÷ 2.5 | R1/8 | CL2.5 | 1 |
| MN604018004P | 40 | 0 ÷ 4 | R1/8 | CL2.5 | 1 |
| MN604018006P | 40 | 0 ÷ 6 | R1/8 | CL2.5 | 1 |
| MN604018010P | 40 | 0 ÷ 10 | R1/8 | CL2.5 | 1 |
| MN604018012P | 40 | 0 ÷ 12 | R1/8 | CL2.5 | 1 |
| MN604018016P | 40 | 0 ÷ 16 | R1/8 | CL2.5 | 1 |
| MN604018025P | 40 | 0 ÷ 25 | R1/8 | CL2.5 | 1 |
| MN604018040P | 40 | 0 ÷ 40 | R1/8 | CL2.5 | 1 |
| MN604018060P | 40 | 0 ÷ 60 | R1/8 | CL2.5 | 1 |
| MN604018100P | 40 | 0 ÷ 100 | R1/8 | CL2.5 | 1 |
| MN604018160P | 40 | 0 ÷ 160 | R1/8 | CL2.5 | 1 |
| MN605018099P | 50 | -1 ÷ 0 | R1/8 | CL2.5 | 1 |
| MN605018001P | 50 | 0 ÷ 1 | R1/8 | CL2.5 | 1 |
| MN605018106P | 50 | 0 ÷ 1.6 | R1/8 | CL2.5 | 1 |
| MN605018205P | 50 | 0 ÷ 2.5 | R1/8 | CL2.5 | 1 |
| MN605018004P | 50 | 0 ÷ 4 | R1/8 | CL2.5 | 1 |
| MN605018006P | 50 | 0 ÷ 6 | R1/8 | CL2.5 | 1 |
| MN605018010P | 50 | 0 ÷ 10 | R1/8 | CL2.5 | 1 |
| MN605018012P | 50 | 0 ÷ 12 | R1/8 | CL2.5 | 1 |
| MN605018016P | 50 | 0 ÷ 16 | R1/8 | CL2.5 | 1 |
| MN605014099P | 50 | -1 ÷ 0 | R1/4 | CL2.5 | 1 |
| MN605014001P | 50 | 0 ÷ 1 | R1/4 | CL2.5 | 1 |
| MN605014106P | 50 | 0 ÷ 1.6 | R1/4 | CL2.5 | 1 |
| MN605014205P | 50 | 0 ÷ 2.5 | R1/4 | CL2.5 | 1 |
| MN605014004P | 50 | 0 ÷ 4 | R1/4 | CL2.5 | 1 |
| MN605014006P | 50 | 0 ÷ 6 | R1/4 | CL2.5 | 1 |
| MN605014010P | 50 | 0 ÷ 10 | R1/4 | CL2.5 | 1 |
| MN605014012P | 50 | 0 ÷ 12 | R1/4 | CL2.5 | 1 |
| MN605014016P | 50 | 0 ÷ 16 | R1/4 | CL2.5 | 1 |
| MN605014025P | 50 | 0 ÷ 25 | R1/4 | CL2.5 | 1 |
| MN606314099P | 63 | -1 ÷ 0 | G1/4 | CL2.5 | 1 |
| MN606314001P | 63 | 0 ÷ 1 | G1/4 | CL2.5 | 1 |
| MN606314106P | 63 | 0 ÷ 1.6 | G1/4 | CL2.5 | 1 |
| MN606314205P | 63 | 0 ÷ 2.5 | G1/4 | CL2.5 | 1 |
| MN606314004P | 63 | 0 ÷ 4 | G1/4 | CL2.5 | 1 |
| MN606314006P | 63 | 0 ÷ 6 | G1/4 | CL2.5 | 1 |
| MN606314010P | 63 | 0 ÷ 10 | G1/4 | CL2.5 | 1 |
| MN606314012P | 63 | 0 ÷ 12 | G1/4 | CL2.5 | 1 |
| MN606314016P | 63 | 0 ÷ 16 | G1/4 | CL2.5 | 1 |
| MN606314025P | 63 | 0 ÷ 25 | G1/4 | CL2.5 | 1 |
| MN606314040P | 63 | 0 ÷ 40 | G1/4 | CL2.5 | 1 |
| MN606314060P | 63 | 0 ÷ 60 | G1/4 | CL2.5 | 1 |
| MN606314100P | 63 | 0 ÷ 100 | G1/4 | CL2.5 | 1 |
| MN606314160P | 63 | 0 ÷ 160 | G1/4 | CL2.5 | 1 |
| MN606314250P | 63 | 0 ÷ 250 | G1/4 | CL2.5 | 1 |
| MN606314315P | 63 | 0 ÷ 315 | G1/4 | CL2.5 | 1 |
| MN606314400P | 63 | 0 ÷ 400 | G1/4 | CL2.5 | 1 |

| Ø | B | D | H | G" | CH | Kg |
|----|----|------|----|------|----|-------|
| 40 | 22 | 41 | 40 | R1/8 | 11 | 0.052 |
| 50 | 27 | 51.5 | 51 | R1/4 | 14 | 0.09 |
| 50 | 27 | 51.5 | 44 | R1/8 | 14 | 0.086 |
| 63 | 22 | 62 | 49 | G1/4 | 14 | 0.102 |



Manometri e vuotometri cassa metallica

Gauges and vacuum gauges steel case

Manometer und Vakuummeter Stahl Gehäuse

Dati tecnici manometri a secco attacco posteriore con flangia 3 fori (serie MN62)

Gauges center back connection with 3 holes flange technical data (MN62 series)

Technischen Daten der Manometer zuruck Angriff mit Frontring (Serie MN62)

Applicazioni

Per aria o acqua adatti a tutti gli impieghi dove non ci sono agenti corrosivi.
Pneumatica, idraulica, condizionamento, medicali.

Descrizione

Manometro costruito secondo Norme UNI EN 837.1 Cassa Metallica Verniciata NERA IP55 dn 40 - 50 - 63 mm trasparente in Plexiglass. Perno e movimento in OTTONE attacco POSTERIORE con FLANGIA (ISO 228 - ISO 7/1) Quadrante in alluminio fondo bianco scala BAR nera e PSI rossa (doppia scala esclusi mano vuotometri). Classe di precisione 2,5 - 1,6% - Lancetta in Alluminio.

Esercizio

Temperatura d'esercizio -10 / +60 °C
Sovrappressione NON AMMESSA

Varianti

Scale Normalizzate: Vuotometro -1 / 0 Bar + CmHg; Manovuotometro -1+0,6; -1+1,5; -1+3; -1+5; -1+9; -1+15 solo Bar; 0,6; 1; 1,6; 2,5; 4; 6; 10; 12; 16; 25; 40; 60; 100; 160; 250; 315; 400 Bar + Psi

Opzioni prodotto

Filetto NPT ANSI B.1.20.1, Cassa Inox AISI 304 o Cromata, Sgrassati per uso ossigeno, scale e/o attacchi personalizzati, loghi, settori colorati, lancetta rossa ISPEL di riferimento, saldatura forte per alte temperature.

Applications

Suitable for all process gaseous and liquid don't attack copper alloy parts. Pneumatics, Heating, ventilation, air-conditioning, Medical engineering.

Description

Pressure gauge made according UNI EN 837.1 norms BLACK steel case dial 40 - 50 - 63 mm.
BRASS movement and pivot BACK (ISO 228 - ISO 7/1) connection with panel FLANGE - Aluminum dial White background Black BAR scale and Red PSI one (double scale except compound gauge) - Accuracy 2,5 - 1,6% - Aluminum index.

Working

Operating temperature +14 / +140 °F
Overpressure NOT ADMITTED

Variants

Normalized scale: gauge compound -1 / 0 Bar + CmHg; Water pressure gauge -1+0,6; -1+1,5; -1+3; -1+5; -1+9; -1+15 Bar only; 0,6; 1; 1,6; 2,5; 4; 6; 10; 12; 16; 25; 40; 60; 100; 160; 250; 315; 400 Bar + Psi

Product options

NPT ANSI B.1.20.1 thread, Clean for oxygen service, customize range, scale or logo; Colored sector, red index, welding for high temperature.

Anwendungen

Für Luft oder Wasser geeignet für alle Anwendungen, bei denen es ätzend.
Pneumatik, Hydraulik, Klimaanlage, medical.

Beschreibung

Gebaut nach UNI EN 837.1, Bargeld Metallica SCHWARZ lackiert IP55 dn 40 - 50 - 63 mm. Transparent Plexiglas. Stift und Bewegung in MESSING. ZURÜCK Angriff mit Flansch (ISO 228 - ISO 7/1). Zifferblatt Aluminium weiß, Skale BAR schwarz und rot PSI (zwei Skalen Vakuummeter ausgeschlossen). Genauigkeitsklasse 2,5 auf 1,6% - Hand aus Aluminium.

Betriebs

Betriebstemperatur -10 / +60 °C
Überdruck NICHT ERLAUBT

Varianten

Maßstab normalisierten Vakuummeter -1 / 0 Bar + CmHg; Mano- Vakuummeter -1+0,6; -1+1,5; -1+3; -1+5; -1+9; -1+15 nur Bar; 0,6; 1; 1,6; 2,5; 4; 6; 10; 12; 16; 25; 40; 60; 100; 160; 250; 315; 400 Bar + Psi

Produkt-Optionen

NPT ANSI B.1.20.1 Gewinde, Edelstahl AISI 304 bar oder Chrom oder Entfetten verwendet Sauerstoff, Treppen und / oder Anhänge individuelle Logos, Felder rot gefärbt Hand ISPEL, starke Schweißen für Hochtemperaturanwendungen.

MN 62



Manometri a secco attacco posteriore con flangia 3 fori

Gauges center back connection with 3 holes flange
Manometer zurück Angriff mit Frontring

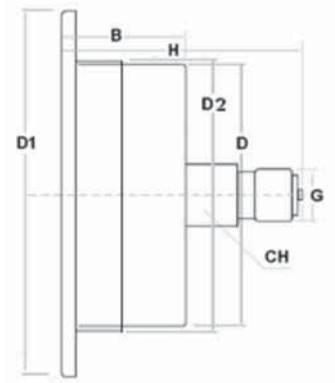
| Ø | B | D | D1 | D2 | H | G" | CH | Kg |
|----|----|----|------|------|----|------|----|-------|
| 40 | 22 | 41 | 60.5 | 43 | 40 | R1/8 | 11 | 0.074 |
| 50 | 27 | 51 | 73 | 53 | 51 | R1/4 | 14 | 0.102 |
| 50 | 27 | 51 | 73 | 53 | 51 | R1/8 | 14 | 0.102 |
| 63 | 22 | 62 | 82.5 | 63.5 | 49 | G1/4 | 14 | 0.145 |

| Codice/Code | Ø | Scala (bar) Range | Attacco" Connection" | Precisione Accuracy | ■ |
|---------------|----|----------------------|-------------------------|------------------------|---|
| MN624018099PF | 40 | -1 ÷ 0 | R1/8 | CL2.5 | 1 |
| MN624018001PF | 40 | 0 ÷ 1 | R1/8 | CL2.5 | 1 |
| MN624018106PF | 40 | 0 ÷ 1.6 | R1/8 | CL2.5 | 1 |
| MN624018205PF | 40 | 0 ÷ 2.5 | R1/8 | CL2.5 | 1 |
| MN624018004PF | 40 | 0 ÷ 4 | R1/8 | CL2.5 | 1 |
| MN624018006PF | 40 | 0 ÷ 6 | R1/8 | CL2.5 | 1 |
| MN624018010PF | 40 | 0 ÷ 10 | R1/8 | CL2.5 | 1 |
| MN624018012PF | 40 | 0 ÷ 12 | R1/8 | CL2.5 | 1 |
| MN624018016PF | 40 | 0 ÷ 16 | R1/8 | CL2.5 | 1 |
| MN624018025PF | 40 | 0 ÷ 25 | R1/8 | CL2.5 | 1 |
| MN624018040PF | 40 | 0 ÷ 40 | R1/8 | CL2.5 | 1 |
| MN624018060PF | 40 | 0 ÷ 60 | R1/8 | CL2.5 | 1 |
| MN624018100PF | 40 | 0 ÷ 100 | R1/8 | CL2.5 | 1 |
| MN624018160PF | 40 | 0 ÷ 160 | R1/8 | CL2.5 | 1 |

| | | | | | |
|---------------|----|---------|------|-------|---|
| MN625018099PF | 50 | -1 ÷ 0 | R1/8 | CL2.5 | 1 |
| MN625018001PF | 50 | 0 ÷ 1 | R1/8 | CL2.5 | 1 |
| MN625018106PF | 50 | 0 ÷ 1.6 | R1/8 | CL2.5 | 1 |
| MN625018205PF | 50 | 0 ÷ 2.5 | R1/8 | CL2.5 | 1 |
| MN625018004PF | 50 | 0 ÷ 4 | R1/8 | CL2.5 | 1 |
| MN625018006PF | 50 | 0 ÷ 6 | R1/8 | CL2.5 | 1 |
| MN625018010PF | 50 | 0 ÷ 10 | R1/8 | CL2.5 | 1 |
| MN625018012PF | 50 | 0 ÷ 12 | R1/8 | CL2.5 | 1 |
| MN625018016PF | 50 | 0 ÷ 16 | R1/8 | CL2.5 | 1 |

| | | | | | |
|---------------|----|---------|------|-------|---|
| MN625014099PF | 50 | -1 ÷ 0 | R1/4 | CL2.5 | 1 |
| MN625014001PF | 50 | 0 ÷ 1 | R1/4 | CL2.5 | 1 |
| MN625014106PF | 50 | 0 ÷ 1.6 | R1/4 | CL2.5 | 1 |
| MN625014205PF | 50 | 0 ÷ 2.5 | R1/4 | CL2.5 | 1 |
| MN625014004PF | 50 | 0 ÷ 4 | R1/4 | CL2.5 | 1 |
| MN625014006PF | 50 | 0 ÷ 6 | R1/4 | CL2.5 | 1 |
| MN625014010PF | 50 | 0 ÷ 10 | R1/4 | CL2.5 | 1 |
| MN625014012PF | 50 | 0 ÷ 12 | R1/4 | CL2.5 | 1 |
| MN625014016PF | 50 | 0 ÷ 16 | R1/4 | CL2.5 | 1 |
| MN625014025PF | 50 | 0 ÷ 25 | R1/4 | CL2.5 | 1 |

| | | | | | |
|---------------|----|---------|------|-------|---|
| MN626314099PF | 63 | -1 ÷ 0 | G1/4 | CL2.5 | 1 |
| MN626314001PF | 63 | 0 ÷ 1 | G1/4 | CL2.5 | 1 |
| MN626314106PF | 63 | 0 ÷ 1.6 | G1/4 | CL2.5 | 1 |
| MN626314205PF | 63 | 0 ÷ 2.5 | G1/4 | CL2.5 | 1 |
| MN626314004PF | 63 | 0 ÷ 4 | G1/4 | CL2.5 | 1 |
| MN626314006PF | 63 | 0 ÷ 6 | G1/4 | CL2.5 | 1 |
| MN626314010PF | 63 | 0 ÷ 10 | G1/4 | CL2.5 | 1 |
| MN626314012PF | 63 | 0 ÷ 12 | G1/4 | CL2.5 | 1 |
| MN626314016PF | 63 | 0 ÷ 16 | G1/4 | CL2.5 | 1 |
| MN626314025PF | 63 | 0 ÷ 25 | G1/4 | CL2.5 | 1 |
| MN626314040PF | 63 | 0 ÷ 40 | G1/4 | CL2.5 | 1 |
| MN626314060PF | 63 | 0 ÷ 60 | G1/4 | CL2.5 | 1 |
| MN626314100PF | 63 | 0 ÷ 100 | G1/4 | CL2.5 | 1 |
| MN626314160PF | 63 | 0 ÷ 160 | G1/4 | CL2.5 | 1 |
| MN626314250PF | 63 | 0 ÷ 250 | G1/4 | CL2.5 | 1 |
| MN626314315PF | 63 | 0 ÷ 315 | G1/4 | CL2.5 | 1 |
| MN626314400PF | 63 | 0 ÷ 400 | G1/4 | CL2.5 | 1 |



Manometri e vuotometri cassa metallica

Gauges and vacuum gauges steel case

Manometer und Vakuummeter Stahl Gehäuse

Dati tecnici manometri a secco attacco posteriore con staffa (serie MN64)

Gauges center back connection with clamp technical data (MN64 series)

Technischen Daten der Manometer zuruck Angriff für Paneeleinbau (Serie MN64)

Applicazioni

Per aria o acqua adatti a tutti gli impieghi dove non ci sono agenti corrosivi.
Pneumatica, idraulica, condizionamento, medicali.

Descrizione

Manometro costruito secondo Norme UNI EN 837.1 Cassa Metallica Verniciata NERA
IP55 dn 40 - 50 - 63 mm trasparente in Plexiglass. Anello cromato, Perno e movimento in OTTONE attacco POSTERIORE con STAFFA (ISO 228 - ISO 7/1) Quadrante in alluminio fondo bianco scala BAR nera e PSI rossa (doppia scala esclusi mano vuotometri). Classe di precisione 2,5 - 1,6% - Lancetta in Alluminio.

Esercizio

Temperatura d'esercizio -10 / +60 °C
Sovrappressione NON AMMESSA

Varianti

Scale Normalizzate: Vuotometro -1 / 0 Bar+CmHg; Manovuotometro -1+0,6; -1+1,5; -1+3; -1+5; -1+9; -1+15 solo Bar; 0,6; 1; 1,6; 2,5; 4; 6; 10; 12; 16; 25; 40; 60; 100; 160; 250; 315; 400 Bar + Psi

Opzioni prodotto

Filetto NPT ANSI B.1.20.1, Cassa Inox AISI 304 o Cromata, Sgrassati per uso ossigeno, scale e/o attacchi personalizzati, loghi, settori colorati, lancetta rossa ISPEL di riferimento, saldatura forte per alte temperature.

Applications

Suitable for all process gaseous and liquid don't attack copper alloy parts. Pneumatics, Heating, ventilation, air-conditioning, Medical engineering.

Description

Pressure gauge made according UNI EN 837.1 norms BLACK steel case dial
40 - 50 - 63 mm. Plexiglas windows, Chromed plated ring, BRASS movement and pivot BACK (ISO 228 - ISO 7/1) connection with U-CLAMP - Aluminum dial White background Black BAR scale and Red PSI one (double scale except compoud gauge) - Accuracy 2,5 - 1,6% - Aluminum index.

Working

Operating temperature +14 / +140 °F
Overpressure NOT ADMITTED

Variants

Normalized scale: gauge compound -1 / 0 Bar+CmHg; Water pressure gauge -1+0,6; -1+1,5; -1+3; -1+5; -1+9; -1+15 solo Bar; 0,6; 1; 1,6; 2,5; 4; 6; 10; 12; 16; 25; 40; 60; 100; 160; 250; 315; 400 Bar + Psi

Product options

NPT ANSI B.1.20.1 thread, GLASS windows, Clean for oxygen service, customize range, scale or logo; Colored sector, red index, welding for high temperature.

Anwendungen

Für Luft oder Wasser geeignet für alle Anwendungen, bei denen es ätzend.
Pneumatik, Hydraulik, Klimaanlage, medical.

Beschreibung

Gebaut nach UNI EN 837.1, Bargeld Metallica SCHWARZ lackiert IP55 dn 40 - 50 - 63 mm. Transparent Plexiglas. Stift und Bewegung in MESSING.
ZURÜCK Angriff mit Paneeleinbau (ISO 228 - ISO 7/1). Wählen Aluminium weiß, Maßstab BAR schwarz, rot für PSI (zwei Skalen Vakuummeter ausgeschlossen). Genauigkeitsklasse 2,5 auf 1,6% - Hand aus Aluminium.

Betriebs

Betriebstemperatur -10 / +60 °C
Überdruck NICHT ERLAUBT

Varianten

Maßstab normalisierten Vakuummeter -1 / 0 Bar+CmHg; Manovuotometer -1+0,6; -1+1,5; -1+3; -1+5; -1+9; -1+15 nur Bar; 0,6; 1; 1,6; 2,5; 4; 6; 10; 12; 16; 25; 40; 60; 100; 160; 250; 315; 400 Bar + PSI

Produkt-Optionen

NPT ANSI B.1.20.1 Gewinde, Edelstahl AISI 304 bar oder Chrom, Entfetten Verwendung Sauerstoff, Treppen und / oder Anhänge individuelle Logos, farbigen Sektoren, rot gefärbt Hand ISPEL, starke Schweißen für Hochtemperaturanwendungen.

MN 64



Manometri a secco attacco posteriore con staffa

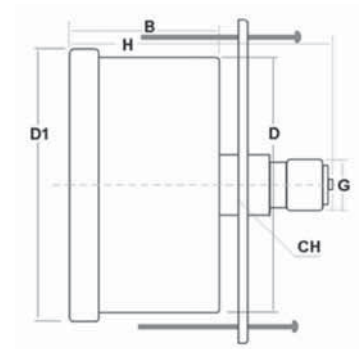
Gauges center back connection with clamp
Manometer zuruck Angriff für Paneleinbau

| Ø | B | D | D1 | H | G" | CH | | Kg |
|----|----|----|------|----|------|----|--|-------|
| 40 | 25 | 39 | 43.3 | 41 | R1/8 | 11 | | 0.099 |
| 50 | 29 | 52 | 57 | 52 | R1/4 | 14 | | 0.145 |
| 63 | 29 | 62 | 68 | 50 | G1/4 | 14 | | 0.174 |

| Codice/Code | Ø | Scala (bar) Range | Attacco" Connection" | Precisione Accuracy | |
|----------------------|----|-------------------|----------------------|---------------------|---|
| MN644018099PS | 40 | -1 ÷ 0 | R1/8 | CL2.5 | 1 |
| MN644018001PS | 40 | 0 ÷ 1 | R1/8 | CL2.5 | 1 |
| MN644018106PS | 40 | 0 ÷ 1.6 | R1/8 | CL2.5 | 1 |
| MN644018205PS | 40 | 0 ÷ 2.5 | R1/8 | CL2.5 | 1 |
| MN644018004PS | 40 | 0 ÷ 4 | R1/8 | CL2.5 | 1 |
| MN644018006PS | 40 | 0 ÷ 6 | R1/8 | CL2.5 | 1 |
| MN644018010PS | 40 | 0 ÷ 10 | R1/8 | CL2.5 | 1 |
| MN644018012PS | 40 | 0 ÷ 12 | R1/8 | CL2.5 | 1 |
| MN644018016PS | 40 | 0 ÷ 16 | R1/8 | CL2.5 | 1 |

| | | | | | |
|----------------------|----|---------|------|-------|---|
| MN645014099PS | 50 | -1 ÷ 0 | R1/4 | CL2.5 | 1 |
| MN645014001PS | 50 | 0 ÷ 1 | R1/4 | CL2.5 | 1 |
| MN645014106PS | 50 | 0 ÷ 1.6 | R1/4 | CL2.5 | 1 |
| MN645014205PS | 50 | 0 ÷ 2.5 | R1/4 | CL2.5 | 1 |
| MN645014004PS | 50 | 0 ÷ 4 | R1/4 | CL2.5 | 1 |
| MN645014006PS | 50 | 0 ÷ 6 | R1/4 | CL2.5 | 1 |
| MN645014010PS | 50 | 0 ÷ 10 | R1/4 | CL2.5 | 1 |
| MN645014012PS | 50 | 0 ÷ 12 | R1/4 | CL2.5 | 1 |
| MN645014016PS | 50 | 0 ÷ 16 | R1/4 | CL2.5 | 1 |
| MN645014025PS | 50 | 0 ÷ 25 | R1/4 | CL2.5 | 1 |

| | | | | | |
|----------------------|----|---------|------|-------|---|
| MN646314099PS | 63 | -1 ÷ 0 | G1/4 | CL2.5 | 1 |
| MN646314001PS | 63 | 0 ÷ 1 | G1/4 | CL2.5 | 1 |
| MN646314106PS | 63 | 0 ÷ 1.6 | G1/4 | CL2.5 | 1 |
| MN646314205PS | 63 | 0 ÷ 2.5 | G1/4 | CL2.5 | 1 |
| MN646314004PS | 63 | 0 ÷ 4 | G1/4 | CL2.5 | 1 |
| MN646314006PS | 63 | 0 ÷ 6 | G1/4 | CL2.5 | 1 |
| MN646314010PS | 63 | 0 ÷ 10 | G1/4 | CL2.5 | 1 |
| MN646314012PS | 63 | 0 ÷ 12 | G1/4 | CL2.5 | 1 |
| MN646314016PS | 63 | 0 ÷ 16 | G1/4 | CL2.5 | 1 |



Manometri e vuotometri cassa metallica

Gauges and vacuum gauges steel case

Manometer und Vakuummeter Stahl Gehäuse

Dati tecnici manometri a secco attacco radiale (serie MN65)

Gauges bottom connection technical data (MN65 series)

Technischen Daten der Manometer radial Angriff (Serie MN65)

Applicazioni

Per aria o acqua adatti a tutti gli impieghi dove non ci sono agenti corrosivi.
Pneumatica, idraulica, condizionamento, medicali.

Descrizione

Manometro costruito secondo Norme UNI EN 837.1 Cassa Metallica Verniciata NERA IP55 dn 40 - 50 - 63 - 80 - 100 mm trasparente in Plexiglass. Perno e movimento in OTTONE attacco RADIALE (ISO 228 - ISO 7/1) Quadrante in alluminio fondo bianco scala BAR nera e PSI rossa (doppia scala esclusi mano vuotometri). Classe di precisione 2,5 - 1,6%. Lancetta in Alluminio.

Esercizio

Temperatura d'esercizio -10 / +60 °C
Sovrappressione NON AMMESSA

Varianti

Scale Normalizzate: Vuotometro -1 / 0 Bar+CmHg; Manovuotometro -1+0,6; -1+1,5; -1+3; -1+5; -1+9; -1+15 solo Bar; 0,6; 1; 1,6; 2,5; 4; 6; 10; 12; 16; 25; 40; 60; 100; 160; 250; 315; 400 Bar + Psi

Opzioni prodotto

Filetto NPT ANSI B.1.20.1, Cassa Inox AISI 304 o Cromata, Sgrassati per uso ossigeno, scale e/o attacchi personalizzati, loghi, settori colorati, lancetta rossa ISPESL di riferimento, saldatura forte per alte temperature. Attacco radiale ad ore 3/9/12.

Applications

Suitable for all process gaseous and liquid don't attack copper alloy parts. Pneumatics, Heating, ventilation, air-conditioning, Medical engineering.

Description

Pressure gauge made according UNI EN 837.1 norms BLACK steel case dial 40 - 50 - 63 - 80 - 100 mm. BRASS movement and pivot BOTTOM (ISO 228 - ISO 7/1) connection - Aluminum dial White background Black BAR scale and Red PSI one (double scale except compound gauge)
Accuracy 2,5 - 1,6% - Aluminum index.

Working

Operating temperature +14 / +140 °F
Overpressure NOT ADMITTED

Variants

Normalized scale: gauge compound -1 / 0 Bar+CmHg; Water pressure gauge -1+0,6; -1+1,5; -1+3; -1+5; -1+9; -1+15 solo Bar; 0,6; 1; 1,6; 2,5; 4; 6; 10; 12; 16; 25; 40; 60; 100; 160; 250; 315; 400 Bar + Psi

Product options

NPT threads ANSI B.1.20.1, Case Stainless steel AISI 304 or Chrome, Degreased for oxygen, scale and / or personalized attacks, logos, colored sectors, hard welding for high-temperature bottom connection at 3 / 9 / 12 hours.

Anwendungen

Für Luft oder Wasser geeignet für alle Anwendungen, bei denen es ätzend.
Pneumatik, Hydraulik, Klimaanlage, medical.

Beschreibung

Gebaut nach UNI EN 837.1, Bargeld Metallica SCHWARZ lackiert IP55 dn 40 - 50 - 63 - 80 - 100 mm. Transparent Plexiglas. Stift und Bewegung in MESSING. ZURÜCK Angriff (ISO 228 - ISO 7/1). Wählen Aluminium weiß, Maßstab BAR schwarz, rot für PSI (zwei Skalen Vakuummeter ausgeschlossen). Genauigkeitsklasse 2,5 auf 1,6%. - Hand aus Aluminium.

Betriebs

Betriebstemperatur -10 / +60 °C
Überdruck NICHT ERLAUBT

Varianten

Maßstab normalisierten Vakuummeter -1 / 0 Bar+CmHg; Manovuotometer -1+0,6; -1+1,5; -1+3; -1+5; -1+9; -1+15 nur Bar; 0,6; 1; 1,6; 2,5; 4; 6; 10; 12; 16; 25; 40; 60; 100; 160; 250; 315; 400 Bar + Psi

Produkt-Optionen

NPT ANSI B.1.20.1 Gewinde, Edelstahl AISI 304 bar oder Chrom, Entfetten Verwendung Sauerstoff, Treppen und / oder Anhängen individuelle Logos, farbigen Sektoren, rot gefärbt Hand ISPESL, starke Schweißen für Hochtemperaturanwendungen. Radial Angriff 3/9/12 Stunden.

MN 65



Manometri a secco attacco radiale

Gauges bottom connection
Manometer radial Angriff

| Ø | A | B | D1 | H | G" | CH | Kg |
|-----|----|------|------|------|-------|----|-------|
| 40 | 8 | 24 | 41 | 36,5 | R 1/8 | 11 | 0,048 |
| 50 | 10 | 27 | 51 | 47 | R 1/4 | 14 | 0,082 |
| 50 | 10 | 27 | 51 | 47 | R 1/8 | 14 | 0,088 |
| 63 | 10 | 27 | 62 | 54 | G 1/4 | 14 | 0,099 |
| 80 | 7 | 32,5 | 79 | 69 | G 3/8 | 17 | 0,184 |
| 100 | 11 | 34,5 | 98,5 | 82 | G 1/2 | 22 | 0,297 |

| Codice/Code | Ø | Scala (bar) Range | Attacco" Connection" | Precisione Accuracy | Icon |
|--------------|----|-------------------|----------------------|---------------------|------|
| MN654018099R | 40 | -1 ÷ 0 | R1/8 | CL2.5 | 1 |
| MN654018001R | 40 | 0 ÷ 1 | R1/8 | CL2.5 | 1 |
| MN654018106R | 40 | 0 ÷ 1.6 | R1/8 | CL2.5 | 1 |
| MN654018205R | 40 | 0 ÷ 2.5 | R1/8 | CL2.5 | 1 |
| MN654018004R | 40 | 0 ÷ 4 | R1/8 | CL2.5 | 1 |
| MN654018006R | 40 | 0 ÷ 6 | R1/8 | CL2.5 | 1 |
| MN654018010R | 40 | 0 ÷ 10 | R1/8 | CL2.5 | 1 |
| MN654018012R | 40 | 0 ÷ 12 | R1/8 | CL2.5 | 1 |
| MN654018016R | 40 | 0 ÷ 16 | R1/8 | CL2.5 | 1 |
| MN654018025R | 40 | 0 ÷ 25 | R1/8 | CL2.5 | 1 |
| MN654018040R | 40 | 0 ÷ 40 | R1/8 | CL2.5 | 1 |
| MN654018060R | 40 | 0 ÷ 60 | R1/8 | CL2.5 | 1 |
| MN654018100R | 40 | 0 ÷ 100 | R1/8 | CL2.5 | 1 |
| MN654018160R | 40 | 0 ÷ 160 | R1/8 | CL2.5 | 1 |
| MN654018250R | 40 | 0 ÷ 250 | R1/8 | CL2.5 | 1 |

new

| | | | | | |
|--------------|----|---------|------|-------|---|
| MN655014099R | 50 | -1 ÷ 0 | R1/4 | CL2.5 | 1 |
| MN655014001R | 50 | 0 ÷ 1 | R1/4 | CL2.5 | 1 |
| MN655014106R | 50 | 0 ÷ 1.6 | R1/4 | CL2.5 | 1 |
| MN655014205R | 50 | 0 ÷ 2.5 | R1/4 | CL2.5 | 1 |
| MN655014004R | 50 | 0 ÷ 4 | R1/4 | CL2.5 | 1 |
| MN655014006R | 50 | 0 ÷ 6 | R1/4 | CL2.5 | 1 |
| MN655014010R | 50 | 0 ÷ 10 | R1/4 | CL2.5 | 1 |
| MN655014012R | 50 | 0 ÷ 12 | R1/4 | CL2.5 | 1 |
| MN655018012R | 50 | 0 ÷ 12 | R1/8 | CL2.5 | 1 |
| MN655014016R | 50 | 0 ÷ 16 | R1/4 | CL2.5 | 1 |
| MN655014025R | 50 | 0 ÷ 25 | R1/4 | CL2.5 | 1 |
| MN655014040R | 50 | 0 ÷ 40 | R1/4 | CL2.5 | 1 |
| MN655014060R | 50 | 0 ÷ 60 | R1/4 | CL2.5 | 1 |
| MN655014100R | 50 | 0 ÷ 100 | R1/4 | CL2.5 | 1 |
| MN655014160R | 50 | 0 ÷ 160 | R1/4 | CL2.5 | 1 |
| MN655014250R | 50 | 0 ÷ 250 | R1/4 | CL2.5 | 1 |

| | | | | | |
|--------------|----|---------|------|-------|---|
| MN656314099R | 63 | -1 ÷ 0 | G1/4 | CL1.6 | 1 |
| MN656314066R | 63 | 0 ÷ 0.6 | G1/4 | CL1.6 | 1 |
| MN656314001R | 63 | 0 ÷ 1 | G1/4 | CL1.6 | 1 |
| MN656314106R | 63 | 0 ÷ 1.6 | G1/4 | CL1.6 | 1 |
| MN656314205R | 63 | 0 ÷ 2.5 | G1/4 | CL1.6 | 1 |
| MN656314004R | 63 | 0 ÷ 4 | G1/4 | CL1.6 | 1 |
| MN656314006R | 63 | 0 ÷ 6 | G1/4 | CL1.6 | 1 |
| MN656314010R | 63 | 0 ÷ 10 | G1/4 | CL1.6 | 1 |
| MN656314012R | 63 | 0 ÷ 12 | G1/4 | CL1.6 | 1 |
| MN656314016R | 63 | 0 ÷ 16 | G1/4 | CL1.6 | 1 |
| MN656314025R | 63 | 0 ÷ 25 | G1/4 | CL1.6 | 1 |
| MN656314040R | 63 | 0 ÷ 40 | G1/4 | CL1.6 | 1 |
| MN656314060R | 63 | 0 ÷ 60 | G1/4 | CL1.6 | 1 |
| MN656314100R | 63 | 0 ÷ 100 | G1/4 | CL1.6 | 1 |
| MN656314160R | 63 | 0 ÷ 160 | G1/4 | CL1.6 | 1 |
| MN656314250R | 63 | 0 ÷ 250 | G1/4 | CL1.6 | 1 |

new

new

new

new

new

new

new

new

new

new

new

new

new

new

new

| | | | | | |
|--------------|----|---------|------|-------|---|
| MN658038099R | 80 | 1 ÷ 0 | G3/8 | CL1.6 | 1 |
| MN658038205R | 80 | 0 ÷ 2.5 | G3/8 | CL1.6 | 1 |
| MN658038004R | 80 | 0 ÷ 4 | G3/8 | CL1.6 | 1 |
| MN658038006R | 80 | 0 ÷ 6 | G3/8 | CL1.6 | 1 |
| MN658038010R | 80 | 0 ÷ 10 | G3/8 | CL1.6 | 1 |
| MN658038016R | 80 | 0 ÷ 16 | G3/8 | CL1.6 | 1 |

new

new

new

new

new

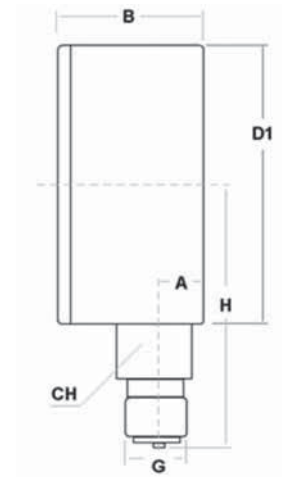
new

new

new

new

| | | | | | |
|--------------|-----|---------|------|-------|---|
| MN651012099R | 100 | -1 ÷ 0 | G1/2 | CL1.6 | 1 |
| MN651012001R | 100 | 0 ÷ 1 | G1/2 | CL1.6 | 1 |
| MN651012106R | 100 | 0 ÷ 1.6 | G1/2 | CL1.6 | 1 |
| MN651012205R | 100 | 0 ÷ 2.5 | G1/2 | CL1.6 | 1 |
| MN651012004R | 100 | 0 ÷ 4 | G1/2 | CL1.6 | 1 |
| MN651012006R | 100 | 0 ÷ 6 | G1/2 | CL1.6 | 1 |
| MN651012010R | 100 | 0 ÷ 10 | G1/2 | CL1.6 | 1 |
| MN651012016R | 100 | 0 ÷ 10 | G1/2 | CL1.6 | 1 |
| MN651012025R | 100 | 0 ÷ 25 | G1/2 | CL1.6 | 1 |



Manometri e vuotometri cassa INOX

Gauges and vacuum gauges INOX case

Manometer und Vakuummeter Edelstahl Gehäuse

Dati tecnici manometri glicerina attacco radiale (serie MX70)

Gauges liquid fillable bottom connection technical data (MX70 series)

Technischen Daten der Manometer Glycerin radial Angriff (Serie MX70)

Applicazioni

Cassa INOX a tenuta stagna o a bagno di glicerina adatti per l'esterno o dove ci sono vibrazioni. Tutte le applicazioni particolari (attacchi, quadranti, scale non normalizzate) possono essere risolte dalle nostre officine. Ampia disponibilità di magazzino.

Descrizione

Manometro costruito secondo Norme UNI EN 837.1 Cassa INOX IP65 AISI 304 dn 63 - 100 mm trasparente in policarbonato. Perno e movimento in OTTONE attacco RADIALE (ISO 228). Quadrante in alluminio fondo bianco scala BAR nera e PSI rossa (doppia scala esclusi mano vuotometri). Classe di precisione 2,5 - 1,0%. Lancetta in Alluminio.

Temperatura d'esercizio

-10 °C / +65 °C

Pressione d'esercizio

Costante 75% - Variabile 60%
Sovrappressione NON AMMESSA

Varianti

Scale Normalizzate: Vuotometro -1 / 0 Bar+CmHg; Mano-vuotometro -1+0,6; -1+1,5; -1+3; -1+5; -1+9; -1+15 solo Bar; 0,6; 1; 1,6; 2,5; 4; 6; 10; 12; 16; 25; 40; 60; 100; 160; 250; 315; 400 Bar + Psi

Opzioni prodotto

Filetto NPT ANSI B.1.20.1 con o senza glicerina, Sgrassatura uso ossigeno, scale e/o attacchi personalizzati, loghi, settori colorati. Attacco radiale ad ore 3/9/12.

Applications

Suitable for all process gaseous and liquid that don't attack copper alloy parts.
Intended for adverse service conditions where pulsating or vibration exists. Hydraulics, Compressors.

Description

Pressure gauge made according UNI EN 837.1 norms Stainless steel case AISI 304 dial 63 - 100 mm. BRASS movement and pivot BOTTOM (ISO 228) connection - Aluminum dial White background Black BAR scale and Red PSI one (double scale except compound gauge).
Accuracy 2,5 - 1,0% - Aluminum index.

Working temperature

+14 °F / +149 °F

Working pressure

Steady 75% - Variable 60%
Overpressure NOT ADMITTED

Variants

Normalized scale: gauge compound -1 / 0 Bar+CmHg; Water pressure gauge -1+0,6; -1+1,5; -1+3; -1+5; -1+9; -1+15 solo Bar; 0,6; 1; 1,6; 2,5; 4; 6; 10; 12; 16; 25; 40; 60; 100; 160; 250; 315; 400 Bar + Psi

Product options

NPT ANSI B.1.20.1 thread, With or without glycerine, OXYGEN SERVICE, customize range, scale or logo; Colored sector; Bottom connection at 3/9/12 hours.

Anwendungen

SST Fall wasserdicht oder Glycerinbad, geeignet für den Außenbereich oder wo es Vibrationen. Alle spezielle Anwendungen (Ports, Zifferblätter, Skalen Nicht-Standard) können von unseren Workshops gelöst werden. Umfangreiches Lager.

Beschreibung

Gebaut nach UNI EN 837.1, Bei IP65 Edelstahl AISI 304 dn 63-100 mm, transparentem Polycarbonat. Stift und Bewegung MESSING Angriff RADIAL (ISO 228). Wählen Aluminium weiß, Maßstab BAR schwarz, rot für PSI (zwei Skalen Vakuummeter ausgeschlossen).
Genauigkeitsklasse 2,5 auf 1,6% - Hand aus Aluminium.

Betriebstemperatur

-10 °C / +65 °C

Betriebsdruck

Constant 75% - 60% Variable
Überdruck NICHT ERLAUBT

Varianten

Maßstab normalisierten Vakuummeter -1 / 0 Bar+CmHg; Mano-Vakuummeter -1+0,6; -1+1,5; -1+3; -1+5; -1+9; -1+15 nur Bar; 0,6; 1; 1,6; 2,5; 4; 6; 10; 12; 16; 25; 40; 60; 100; 160; 250; 315; 400 Bar + Psi

Produkt-Optionen

Gewinde NPT ANSI B.1.20.1 mit oder ohne Glycerin, Entfetten Verwendung Sauerstoff, Treppen und / oder Anhänge individuelle Logos, farbigen Sektoren. Radial Angriff 3/9/12 Stunden.

MX 70



Manometri glicerina attacco radiale

Gauges liquid fillable bottom connection
Manometer Glycerin radial Angriff

| Ø | A | B | D | D1 | H | G" | CH | Kg |
|-----|----|----|------|-----|----|-------|----|-------|
| 63 | 10 | 29 | 62 | 68 | 57 | G 1/4 | 14 | 0.207 |
| 100 | 10 | 38 | 98.5 | 110 | 82 | G 1/2 | 22 | 0.645 |

| Code/Code | Ø | Scala (bar) Range | Attacco" Connection" | Precisione Accuracy | 📦 |
|-------------------------|----|-------------------|----------------------|---------------------|---|
| MX706314099R | 63 | 1 ÷ 0 | G1/4 | CL1.6 | 1 |
| new MX706314115R | 63 | -1 ÷ 1.5 | G1/4 | CL1.6 | 1 |
| new MX706314903R | 63 | -1 ÷ 3 | G1/4 | CL1.6 | 1 |
| new MX706314905R | 63 | -1 ÷ 5 | G1/4 | CL1.6 | 1 |
| new MX706314909R | 63 | -1 ÷ 9 | G1/4 | CL1.6 | 1 |
| new MX706314915R | 63 | -1 ÷ 15 | G1/4 | CL1.6 | 1 |
| new MX706314Z06R | 63 | 0 ÷ 0.6 | G1/4 | CL1.6 | 1 |
| MX706314001R | 63 | 0 ÷ 1 | G1/4 | CL1.6 | 1 |
| MX706314106R | 63 | 0 ÷ 1.6 | G1/4 | CL1.6 | 1 |
| MX706314205R | 63 | 0 ÷ 2.5 | G1/4 | CL1.6 | 1 |
| MX706314004R | 63 | 0 ÷ 4 | G1/4 | CL1.6 | 1 |
| MX706314006R | 63 | 0 ÷ 6 | G1/4 | CL1.6 | 1 |
| MX706314010R | 63 | 0 ÷ 10 | G1/4 | CL1.6 | 1 |
| new MX706314012R | 63 | 0 ÷ 12 | G1/4 | CL1.6 | 1 |
| MX706314016R | 63 | 0 ÷ 16 | G1/4 | CL1.6 | 1 |
| MX706314025R | 63 | 0 ÷ 25 | G1/4 | CL1.6 | 1 |
| MX706314040R | 63 | 0 ÷ 40 | G1/4 | CL1.6 | 1 |
| MX706314060R | 63 | 0 ÷ 60 | G1/4 | CL1.6 | 1 |
| MX706314100R | 63 | 0 ÷ 100 | G1/4 | CL1.6 | 1 |
| MX706314160R | 63 | 0 ÷ 160 | G1/4 | CL1.6 | 1 |
| MX706314250R | 63 | 0 ÷ 250 | G1/4 | CL1.6 | 1 |
| MX706314315R | 63 | 0 ÷ 315 | G1/4 | CL1.6 | 1 |
| MX706314400R | 63 | 0 ÷ 400 | G1/4 | CL1.6 | 1 |
| MX706314600R | 63 | 0 ÷ 600 | G1/4 | CL1.6 | 1 |
| MX7063141000R | 63 | 0 ÷ 1000 | G1/4 | CL1.6 | 1 |

new
new
new
new
new
new

new

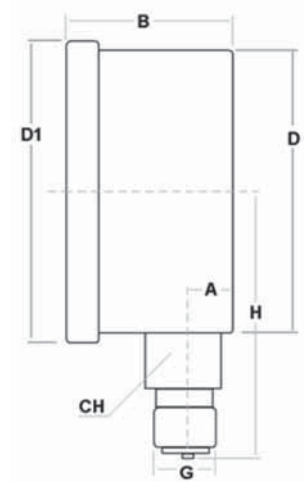
Se richiesta possiamo fornire manovuotometri D.63 scale -1+0,6; -1+1,5; -1+3; -1+5; -1+9

On demand we can supply gauges compound D.63 Range -1+0,6; -1+1,5; -1+3; -1+5; -1+9

Auf Wunsch liefern wir Manovakuummeter D.63 Skala -1+0,6; -1+1,5; -1+3; -1+5; -1+9

new
new
new
new
new

| | | | | | |
|-------------------------|-----|----------|------|-------|---|
| MX701012099R | 100 | 1 ÷ 0 | G1/2 | CL1.0 | 1 |
| MX701012115R | 100 | -1 ÷ 1.5 | G1/2 | CL1.0 | 1 |
| new MX701012903R | 100 | -1 ÷ 3 | G1/2 | CL1.0 | 1 |
| new MX701012905R | 100 | -1 ÷ 5 | G1/2 | CL1.0 | 1 |
| new MX701012909R | 100 | -1 ÷ 9 | G1/2 | CL1.0 | 1 |
| new MX701012915R | 100 | -1 ÷ 15 | G1/2 | CL1.0 | 1 |
| MX701012001R | 100 | 0 ÷ 1 | G1/2 | CL1.0 | 1 |
| MX701012106R | 100 | 0 ÷ 1.6 | G1/2 | CL1.0 | 1 |
| MX701012205R | 100 | 0 ÷ 2.5 | G1/2 | CL1.0 | 1 |
| MX701012004R | 100 | 0 ÷ 4 | G1/2 | CL1.0 | 1 |
| MX701012006R | 100 | 0 ÷ 6 | G1/2 | CL1.0 | 1 |
| MX701012010R | 100 | 0 ÷ 10 | G1/2 | CL1.0 | 1 |
| MX701012016R | 100 | 0 ÷ 16 | G1/2 | CL1.0 | 1 |
| MX701012025R | 100 | 0 ÷ 25 | G1/2 | CL1.0 | 1 |
| MX701012040R | 100 | 0 ÷ 40 | G1/2 | CL1.0 | 1 |
| MX701012060R | 100 | 0 ÷ 60 | G1/2 | CL1.0 | 1 |
| MX701012100R | 100 | 0 ÷ 100 | G1/2 | CL1.0 | 1 |
| MX701012160R | 100 | 0 ÷ 160 | G1/2 | CL1.0 | 1 |
| MX701012250R | 100 | 0 ÷ 250 | G1/2 | CL1.0 | 1 |
| MX701012400R | 100 | 0 ÷ 400 | G1/2 | CL1.0 | 1 |
| MX701012600R | 100 | 0 ÷ 600 | G1/2 | CL1.0 | 1 |
| MX7010121000R | 100 | 0 ÷ 1000 | G1/2 | CL1.0 | 1 |



Manometri e vuotometri cassa INOX

Gauges and vacuum gauges INOX case

Manometer und Vakuummeter Edelstahl Gehäuse

Dati tecnici manometri glicerina attacco posteriore (serie MX71)

Gauges liquid fillable back connection technical data (MX71 series)

Technischen Daten der Manometer Glycerin zuruck Angriff (Serie MX71)

Applicazioni

Cassa INOX a tenuta stagna o a bagno di glicerina adatti per l'esterno o dove ci sono vibrazioni. Tutte le applicazioni particolari (attacchi, quadranti, scale non normalizzate) possono essere risolte dalle nostre officine. Ampia disponibilità di magazzino.

Descrizione

Manometro costruito secondo Norme UNI EN 837.1 Cassa INOX IP65 AISI 304 dn 40 - 50 - 63 mm trasparente in policarbonato. Perno e movimento in OTTONE attacco POSTERIORE (ISO 228 - ISO 7/1) Quadrante in alluminio fondo bianco scala BAR nera e PSI rossa (doppia scala esclusi mano vuotometri). Classe di precisione 2,5 - 1,6%. Lancetta in Alluminio.

Temperatura d'esercizio

-10 °C / +65 °C

Pressione d'esercizio

Costante 75% - Variabile 60%
Sovrappressione NON AMMESSA

Varianti

Scale Normalizzate: Vuotometro -1 / 0 Bar+CmHg; Mano-vuotometro -1+0,6; -1+1,5; -1+3; -1+5; -1+9; -1+15 solo Bar; 0,6; 1; 1,6; 2,5; 4; 6; 10; 12; 16; 25; 40; 60; 100; 160; 250; 315; 400 Bar + Psi

Opzioni prodotto

Filetto NPT ANSI B.1.20.1 con o senza glicerina, Sgrassatura uso ossigeno, scale e/o attacchi personalizzati, loghi, settori colorati. Attacco radiale ad ore 3/9/12.

Applications

Stainless steel case sealed or glycerine suitable for outdoor use or where there are vibrations.
All applications (attacks, dials, scales non-standard) can be solved by our workshops. Wide availability of stock.

Description

Pressure gauge made according UNI EN 837.1 norms Stainless steel case AISI 304 dial 40 - 50 - 63 mm. BRASS movement and pivot BACK (ISO 228 - ISO 7/1) connection - Aluminum dial White background Black BAR scale and Red PSI one (double scale except compound gauge). Accuracy 2,5 - 1,6% - Aluminum index.

Working temperature

+14 °F / +149 °F

Working pressure

Steady 75% - Variable 60%
Overpressure NOT ADMITTED

Variants

Normalized scale: gauge compound -1 / 0 Bar+CmHg; Water pressure gauge -1+0,6; -1+1,5; -1+3; -1+5; -1+9; -1+15 solo Bar; 0,6; 1; 1,6; 2,5; 4; 6; 10; 12; 16; 25; 40; 60; 100; 160; 250; 315; 400 Bar + Psi

Product options

NPT ANSI B.1.20.1 thread, With or without glycerine, OXYGEN SERVICE, customize range, scale or logo; Colored sector; Bottom connection at 3/9/12 hours.

Anwendungen

SST Fall wasserdicht oder Glycerinbad, geeignet für den Außenbereich oder wo es Vibrationen. Alle spezielle Anwendungen (Ports, Zifferblätter, Skalen Nicht-Standard) können von unseren Workshops gelöst werden. Umfangreiches Lager.

Beschreibung

Gebaut nach UNI EN 837.1, Bei IP65 Edelstahl AISI 304 dn 40 - 50 - 63 mm, transparentem Polycarbonat. Stift und Bewegung MESSING Angriff ZURÜCK (ISO 228 - ISO 7/1). Wählen Aluminium weiß, Maßstab BAR schwarz, rot für PSI (zwei Skalen Vakuummeter ausgeschlossen). Genauigkeitsklasse 2,5 auf 1,6%. Hand aus Aluminium.

Betriebstemperatur

-10 °C / +65 °C

Betriebsdruck

Constant 75% - 60% Variable
Überdruck NICHT ERLAUBT

Varianten

Maßstab normalisierten Vakuummeter -1 / 0 Bar+CmHg; Mano-Vakuummeter -1+0,6; -1+1,5; -1+3; -1+5; -1+9; -1+15 nur Bar; 0,6; 1; 1,6; 2,5; 4; 6; 10; 12; 16; 25; 40; 60; 100; 160; 250; 315; 400 Bar + Psi

Produkt-Optionen

Gewinde NPT ANSI B.1.20.1 mit oder ohne Glycerin, Entfetten Verwendung Sauerstoff, Treppen und / oder Anhänge individuelle Logos, farbigen Sektoren. Radial Angriff 3/9/12 Stunden.

MX 71



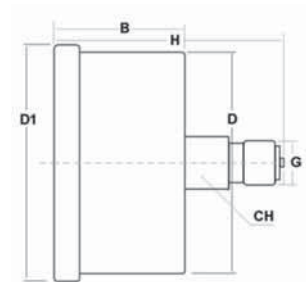
Manometri glicerina attacco posteriore

Gauges liquid fillable back connection
Manometer Glycerin zuruck Angriff

| Ø | B | D | D1 | H | G" | CH | Kg |
|----|----|------|----|----|------|----|-------|
| 40 | 25 | 40.5 | 44 | 43 | R1/8 | 11 | 0.110 |
| 50 | 28 | 51 | 56 | 50 | G1/4 | 14 | 0.145 |
| 63 | 29 | 62 | 68 | 53 | G1/4 | 14 | 0.188 |

| Codice/Code | Ø | Scala (bar) Range | Attacco" Connection" | Precisione Accuracy | 📦 |
|-------------|---|-------------------|----------------------|---------------------|---|
|-------------|---|-------------------|----------------------|---------------------|---|

| | | | | | | |
|------------|----------------------|----|----------|------|-------|---|
| new | MX714018099P | 40 | -1 ÷ 0 | R1/8 | CL2.5 | 1 |
| new | MX714018001P | 40 | 0 ÷ 1 | R1/8 | CL2.5 | 1 |
| new | MX714018205P | 40 | 0 ÷ 2.5 | R1/8 | CL2.5 | 1 |
| new | MX714018006P | 40 | 0 ÷ 6 | R1/8 | CL2.5 | 1 |
| new | MX714018010P | 40 | 0 ÷ 10 | R1/8 | CL2.5 | 1 |
| new | MX714018016P | 40 | 0 ÷ 16 | R1/8 | CL2.5 | 1 |
| new | MX714018025P | 40 | 0 ÷ 25 | R1/8 | CL2.5 | 1 |
| new | MX714018100P | 40 | 0 ÷ 100 | R1/8 | CL2.5 | 1 |
| new | MX714018160P | 40 | 0 ÷ 160 | R1/8 | CL2.5 | 1 |
| new | MX714018250P | 40 | 0 ÷ 250 | R1/8 | CL2.5 | 1 |
| new | MX714018400P | 40 | 0 ÷ 400 | R1/8 | CL2.5 | 1 |
| new | MX715014099P | 50 | -1 ÷ 0 | G1/4 | CL2.5 | 1 |
| new | MX715014205P | 50 | 0 ÷ 2.5 | G1/4 | CL2.5 | 1 |
| new | MX715014004P | 50 | 0 ÷ 4 | G1/4 | CL2.5 | 1 |
| new | MX715014006P | 50 | 0 ÷ 6 | G1/4 | CL2.5 | 1 |
| new | MX715014010P | 50 | 0 ÷ 10 | G1/4 | CL2.5 | 1 |
| new | MX715014016P | 50 | 0 ÷ 16 | G1/4 | CL2.5 | 1 |
| new | MX715014025P | 50 | 0 ÷ 25 | G1/4 | CL2.5 | 1 |
| new | MX715014100P | 50 | 0 ÷ 100 | G1/4 | CL2.5 | 1 |
| new | MX715014250P | 50 | 0 ÷ 250 | G1/4 | CL2.5 | 1 |
| new | MX715014400P | 50 | 0 ÷ 400 | G1/4 | CL2.5 | 1 |
| new | MX716314099P | 63 | -1 ÷ 0 | G1/4 | CL1.6 | 1 |
| new | MX716314115P | 63 | -1 ÷ 1.5 | G1/4 | CL1.6 | 1 |
| new | MX716314903P | 63 | -1 ÷ 3 | G1/4 | CL1.6 | 1 |
| new | MX716314905P | 63 | -1 ÷ 5 | G1/4 | CL1.6 | 1 |
| new | MX716314909P | 63 | -1 ÷ 9 | G1/4 | CL1.6 | 1 |
| new | MX716314001P | 63 | 0 ÷ 1 | G1/4 | CL1.6 | 1 |
| new | MX716314106P | 63 | 0 ÷ 1.6 | G1/4 | CL1.6 | 1 |
| new | MX716314205P | 63 | 0 ÷ 2.5 | G1/4 | CL1.6 | 1 |
| new | MX716314004P | 63 | 0 ÷ 4 | G1/4 | CL1.6 | 1 |
| new | MX716314006P | 63 | 0 ÷ 6 | G1/4 | CL1.6 | 1 |
| new | MX716314010P | 63 | 0 ÷ 10 | G1/4 | CL1.6 | 1 |
| new | MX716314016P | 63 | 0 ÷ 16 | G1/4 | CL1.6 | 1 |
| new | MX716314025P | 63 | 0 ÷ 25 | G1/4 | CL1.6 | 1 |
| new | MX716314040P | 63 | 0 ÷ 40 | G1/4 | CL1.6 | 1 |
| new | MX716314060P | 63 | 0 ÷ 60 | G1/4 | CL1.6 | 1 |
| new | MX716314100P | 63 | 0 ÷ 100 | G1/4 | CL1.6 | 1 |
| new | MX716314160P | 63 | 0 ÷ 160 | G1/4 | CL1.6 | 1 |
| new | MX716314250P | 63 | 0 ÷ 250 | G1/4 | CL1.6 | 1 |
| new | MX716314315P | 63 | 0 ÷ 315 | G1/4 | CL1.6 | 1 |
| new | MX716314400P | 63 | 0 ÷ 400 | G1/4 | CL1.6 | 1 |
| new | MX716314600P | 63 | 0 ÷ 600 | G1/4 | CL1.6 | 1 |
| new | MX7163141000P | 63 | 0 ÷ 1000 | G1/4 | CL1.6 | 1 |



MX 99



Staffa posteriore per manometri glicerina INOX Ø 40-50-63

Back clamp for INOX gauges liquid fillable back connection Ø 40-50-63
Paneelblech für Manometer Glycerin INOX Ø 40-50-63

| Codice/Code | Ø | 📦 |
|------------------|---------|---|
| MX990040P | 40 | 1 |
| MX990063P | 50 - 63 | 1 |

Manometri e vuotometri cassa INOX

Gauges and vacuum gauges INOX case

Manometer und Vakuummeter Edelstahl Gehäuse

Dati tecnici manometri glicerina attacco posteriore con flangia 3 fori (serie MX72)

Gauges liquid fillable back connection with 3 holes flange technical data (MX72 series)

Technischen Daten der Manometer Glycerin zuruck Angriff für Paneelmontage (Serie MX72)

Applicazioni

Cassa INOX a tenuta stagna o a bagno di glicerina adatti per l'esterno o dove ci sono vibrazioni. Tutte le applicazioni particolari (attacchi, quadranti, scale non normalizzate) possono essere risolte dalle nostre officine. Ampia disponibilità di magazzino.

Descrizione

Manometro costruito secondo Norme UNI EN 837.1 Cassa INOX IP65 AISI 304 dn 40-50-63 mm trasparente in policarbonato. Perno e movimento in OTTONE attacco POSTERIORE (ISO 228-ISO 7/1) con FLANGIA Quadrante in alluminio fondo bianco scala BAR nera e PSI rossa (doppia scala esclusi mano vuotometri). Classe di precisione 2,5 - 1,6% - Lancetta in Alluminio

Temperatura d'esercizio

-10 / +65 °C

Pressione d'esercizio

Costante 75% - Variabile 60%
Sovrappressione NON AMMESSA

Varianti

Scale Normalizzate: Vuotometro -1 / 0 Bar+CmHg; Mano-vuotometro -1+0,6; -1+1,5; -1+3; -1+5; -1+9; -1+15 solo Bar; 0,6; 1; 1,6; 2,5; 4; 6; 10; 12; 16; 25; 40; 60; 100; 160; 250; 315; 400 Bar + Psi

Opzioni prodotto

Filetto NPT ANSI B.1.20.1 con o senza glicerina, Sgrassatura uso ossigeno, scale e/o attacchi personalizzati, loghi, settori colorati.

Applications

Suitable for all process gaseous and liquid that don't attack copper alloy parts.
Intended for adverse service conditions where pulsating or vibration exists. Hydraulics, Compressors.

Description

Pressure gauge made according UNI EN 837.1 norms Stainless steel case AISI 304 dial 40-50-63 mm. BRASS movement and pivot BACK (ISO 228 - ISO 7/1) connection with panel FLANGE - Aluminum dial White background Black BAR scale and Red PSI one (double scale except compoud gauge).
Accuracy 2,5, 1,6% - Aluminum index

Working temperature

+14 °F / +149 °F

Working pressure

Steady 75% - Variable 60%
Overpressure NOT ADMITTED

Variants

Normalized scale: gauge compound -1 / 0 Bar+CmHg; Water pressure gauge -1+0,6; -1+1,5; -1+3; -1+5; -1+9; -1+15 solo Bar; 0,6; 1; 1,6; 2,5; 4; 6; 10; 12; 16; 25; 40; 60; 100; 160; 250; 315; 400 Bar + Psi

Product options

NPT ANSI B.1.20.1 thread, With or without glycerine, OXYGEN SERVICE, customize range, scale or logo, colored sector.

Anwendungen

SST Fall wasserdicht oder Glycerinbad, geeignet für den Außenbereich oder wo es Vibrationen. Alle spezielle Anwendungen (Ports, Zifferblätter, Skalen Nicht-Standard) können von unseren Workshops gelöst werden. Umfangreiches Lager.

Beschreibung

Gebaut nach UNI EN 837.1, Bei IP65 Edelstahl AISI 304 dn 40 - 50 - 63 mm, transparentem Polycarbonat. Stift und Bewegung MESSING Angriff ZURÜCK (ISO 228 - ISO 7/1) mit Frontring. Wählen Aluminium weiß ,Maßstab BAR schwarz, rot für PSI (zwei Skalen Vakuummeter ausgeschlossen).
Genauigkeitsklasse 2,5 auf 1,0%. - Hand aus Aluminium

Betriebstemperatur

-10 °C / +65 °C

Betriebsdruck

Constant 75% - 60% Variable
Überdruck NICHT ERLAUBT

Varianten

Maßstab normalisierten Vakuummeter -1 / 0 Bar+CmHg; Mano-Vakuummeter -1+0,6; -1+1,5; -1+3; -1+5; -1+9; -1+15 nur Bar; 0,6; 1; 1,6; 2,5; 4; 6; 10; 12; 16; 25; 40; 60; 100; 160; 250; 315; 400 Bar + Psi

Produkt-Optionen

Gewinde NPT ANSI B.1.20.1 mit oder ohne Glycerin, Entfetten Verwendung Sauerstoff, Treppen und / oder Anhänge individuelle Logos, farbigen Sektoren.

MX 72



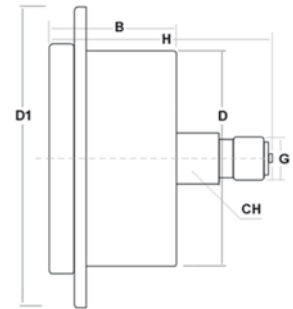
Manometri glicerina attacco post. con flangia 3 fori

Gauges liquid fillable back connection with 3 holes flange
Manometer Glycerin zurück Angriff für Paneelmontage

| Ø | B | D | D1 | H | G" | CH | Kg |
|----|----|------|----|----|------|----|-------|
| 40 | 25 | 40.5 | 61 | 43 | R1/8 | 11 | 0.110 |
| 50 | 28 | 51 | 72 | 50 | G1/4 | 14 | 0.145 |
| 63 | 29 | 62 | 83 | 53 | G1/4 | 14 | 0.188 |

| Codice/Code | Ø | Scala (bar) Range | Attacco" Connection" | Precisione Accuracy | 📦 |
|-------------|---|-------------------|----------------------|---------------------|---|
|-------------|---|-------------------|----------------------|---------------------|---|

| | | | | | | |
|------------|----------------------|----|----------|------|-------|---|
| new | MX724018099PF | 40 | -1 ÷ 0 | R1/8 | CL2.5 | 1 |
| new | MX724018001PF | 40 | 0 ÷ 1 | R1/8 | CL2.5 | 1 |
| new | MX724018205PF | 40 | 0 ÷ 2.5 | R1/8 | CL2.5 | 1 |
| new | MX724018006PF | 40 | 0 ÷ 6 | R1/8 | CL2.5 | 1 |
| new | MX724018010PF | 40 | 0 ÷ 10 | R1/8 | CL2.5 | 1 |
| new | MX724018016PF | 40 | 0 ÷ 16 | R1/8 | CL2.5 | 1 |
| new | MX724018025PF | 40 | 0 ÷ 25 | R1/8 | CL2.5 | 1 |
| new | MX724018100PF | 40 | 0 ÷ 100 | R1/8 | CL2.5 | 1 |
| new | MX724018160PF | 40 | 0 ÷ 160 | R1/8 | CL2.5 | 1 |
| new | MX724018250PF | 40 | 0 ÷ 250 | R1/8 | CL2.5 | 1 |
| new | MX724018400PF | 40 | 0 ÷ 400 | R1/8 | CL2.5 | 1 |
| new | MX725014001PF | 50 | 0 ÷ 1 | G1/4 | CL2.5 | 1 |
| new | MX725014205PF | 50 | 0 ÷ 2.5 | G1/4 | CL2.5 | 1 |
| new | MX725014004PF | 50 | 0 ÷ 4 | G1/4 | CL2.5 | 1 |
| new | MX725014006PF | 50 | 0 ÷ 6 | G1/4 | CL2.5 | 1 |
| new | MX725014010PF | 50 | 0 ÷ 10 | G1/4 | CL2.5 | 1 |
| new | MX725014016PF | 50 | 0 ÷ 16 | G1/4 | CL2.5 | 1 |
| new | MX725014025PF | 50 | 0 ÷ 25 | G1/4 | CL2.5 | 1 |
| new | MX725014100PF | 50 | 0 ÷ 100 | G1/4 | CL2.5 | 1 |
| new | MX725014250PF | 50 | 0 ÷ 250 | G1/4 | CL2.5 | 1 |
| new | MX725014400PF | 50 | 0 ÷ 400 | G1/4 | CL2.5 | 1 |
| new | MX726314099PF | 63 | -1 ÷ 0 | G1/4 | CL1.6 | 1 |
| new | MX726314115PF | 63 | -1 ÷ 1.5 | G1/4 | CL1.6 | 1 |
| new | MX726314903PF | 63 | -1 ÷ 3 | G1/4 | CL1.6 | 1 |
| new | MX726314905PF | 63 | -1 ÷ 5 | G1/4 | CL1.6 | 1 |
| | MX726314909PF | 63 | -1 ÷ 9 | G1/4 | CL1.6 | 1 |
| | MX726314001PF | 63 | 0 ÷ 1 | G1/4 | CL1.6 | 1 |
| | MX726314106PF | 63 | 0 ÷ 1.6 | G1/4 | CL1.6 | 1 |
| | MX726314205PF | 63 | 0 ÷ 2.5 | G1/4 | CL1.6 | 1 |
| | MX726314004PF | 63 | 0 ÷ 4 | G1/4 | CL1.6 | 1 |
| | MX726314006PF | 63 | 0 ÷ 6 | G1/4 | CL1.6 | 1 |
| | MX726314010PF | 63 | 0 ÷ 10 | G1/4 | CL1.6 | 1 |
| | MX726314016PF | 63 | 0 ÷ 16 | G1/4 | CL1.6 | 1 |
| | MX726314025PF | 63 | 0 ÷ 25 | G1/4 | CL1.6 | 1 |
| | MX726314040PF | 63 | 0 ÷ 40 | G1/4 | CL1.6 | 1 |
| | MX726314060PF | 63 | 0 ÷ 60 | G1/4 | CL1.6 | 1 |
| | MX726314100PF | 63 | 0 ÷ 100 | G1/4 | CL1.6 | 1 |
| | MX726314160PF | 63 | 0 ÷ 160 | G1/4 | CL1.6 | 1 |
| | MX726314250PF | 63 | 0 ÷ 250 | G1/4 | CL1.6 | 1 |
| | MX726314400PF | 63 | 0 ÷ 400 | G1/4 | CL1.6 | 1 |
| | MX726314600PF | 63 | 0 ÷ 600 | G1/4 | CL1.6 | 1 |



MX 72PF



Flangia 3 fori per manometri glicerina INOX

3 Holes flange for INOX gauges liquid fillable
Paneelring für Manometer Glycerin INOX

| Codice/Code | Ø | 📦 |
|-------------------|-----|---|
| MX720063PF | 63 | 1 |
| MX720100PF | 100 | 1 |

Manometri e vuotometri cassa INOX

Gauges and vacuum gauges INOX case

Manometer und Vakuummeter Edelstahl Gehäuse

Dati tecnici manometri glicerina attacco posteriore con staffa (serie MX73)

Gauges liquid fillable back connection with clamp technical data (MX73 series)

Technischen Daten der Manometer Glycerin zuruck Angriff mit Paneeleinbau (Serie MX73)

Applicazioni

Cassa INOX a tenuta stagna o a bagno di glicerina adatti per l'esterno o dove ci sono vibrazioni. Tutte le applicazioni particolari (attacchi, quadranti, scale non normalizzate) possono essere risolte dalle nostre officine. Ampia disponibilità di magazzino.

Descrizione

Manometro costruito secondo Norme UNI EN 837.1 Cassa INOX IP65 AISI 304 trasparente in policarbonato. Perno e movimento in OTTONE attacco POSTERIORE (ISO 228) con STAFFA Quadrante in alluminio fondo bianco scala BAR nera e PSI rossa (doppia scala esclusi mano vuotometri). Classe di precisione 1,0% - Lancetta in Alluminio

Temperatura d'esercizio

-10 / +65 °C

Pressione d'esercizio

Costante 75% - Variabile 60%
Sovrappressione NON AMMESSA

Varianti

Scale Normalizzate: Vuotometro -1 / 0 Bar+CmHg; Mano-vuotometro -1+0,6; -1+1,5; -1+3; -1+5; -1+9; -1+15 solo Bar; 0,6; 1; 1,6; 2,5; 4; 6; 10; 12; 16; 25; 40; 60; 100; 160; 250; 315; 400 Bar + Psi

Opzioni prodotto

Filetto NPT ANSI B.1.20.1 con o senza glicerina, Sgrassatura uso ossigeno, scale e/o attacchi personalizzati, loghi, settori colorati; contatti elettrici.

Applications

Suitable for all process gaseous and liquid that don't attack copper alloy parts. Intended for adverse service conditions where pulsating or vibration exists. Hydraulics, Compressors.

Description

Pressure gauge made according UNI EN 837.1 norms Stainless steel case AISI 304. BRASS movement and pivot BACK (ISO 228) connection with U-CLAMP - Aluminum dial White background Black BAR scale and Red PSI one (double scale except compound gauge). Accuracy 1,0% - Aluminum index

Working temperature

+14 °F / +149 °F

Working pressure

Steady 75% - Variable 60%
Overpressure NOT ADMITTED

Variants

Normalized scale: gauge compound -1 / 0 Bar+CmHg; Water pressure gauge -1+0,6; -1+1,5; -1+3; -1+5; -1+9; -1+15 solo Bar; 0,6; 1; 1,6; 2,5; 4; 6; 10; 12; 16; 25; 40; 60; 100; 160; 250; 315; 400 Bar + Psi

Product options

NPT ANSI B.1.20.1 thread, With or without glycerine, OXYGEN SERVICE, customize range, scale or logo; Colored sector; electric switch.

Anwendungen

SST Fall wasserdicht oder Glycerinbad, geeignet für den Außenbereich oder wo es Vibrationen. Alle spezielle Anwendungen (Ports, Zifferblätter, Skalen Nicht-Standard) können von unseren Workshops gelöst werden. Umfangreiches Lager.

Beschreibung

Gebaut nach UNI EN 837.1, Bei IP65 Edelstahl AISI 304, transparentem Polycarbonat. Stift und Bewegung MESSING Angriff ZURÜCK (ISO 228) mit Frontring. Wählen Aluminium weiß, Maßstab BAR schwarz, rot für PSI (zwei Skalen Vakuummeter ausgeschlossen). Genauigkeitsklasse 2,5 auf 1,0%. - Hand aus Aluminium

Betriebstemperatur

-10 °C / +65 °C

Betriebsdruck

Constant 75% - 60% Variable
Überdruck NICHT ERLAUBT

Varianten

Maßstab normalisierten Vakuummeter -1 / 0 Bar+CmHg; Mano-Vakuummeter -1+0,6; -1+1,5; -1+3; -1+5; -1+9; -1+15 nur Bar; 0,6; 1; 1,6; 2,5; 4; 6; 10; 12; 16; 25; 40; 60; 100; 160; 250; 315; 400 Bar + Psi

Produkt-Optionen

Gewinde NPT ANSI B.1.20.1 mit oder ohne Glycerin, Entfetten Verwendung Sauerstoff, Treppen und / oder Anhänge individuelle Logos, farbigen Sektoren, elektrischen Kontakten.

MX 73

new

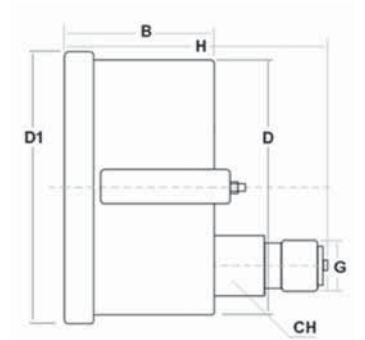


Manometri glicerina attacco posteriore con staffa

Gauges liquid fillable back connection with clamp
Manometer Glycerin zuruck Angriff mit Paneleinbau

| Ø | B | D | D1 | H | G" | CH | | Kg |
|-----|----|------|-----|----|------|----|--|------|
| 100 | 36 | 98.5 | 110 | 82 | G1/2 | 22 | | 0.75 |

| Codice/Code | Ø | Scala (bar) Range | Attacco" Connection" | Precisione Accuracy | |
|----------------------|-----|-------------------|----------------------|---------------------|---|
| MX731012099PS | 100 | -1 ÷ 0 | G1/2 | CL1 | 1 |
| MX731012903PS | 100 | -1 ÷ 3 | G1/2 | CL1 | 1 |
| MX731012905PS | 100 | -1 ÷ 5 | G1/2 | CL1 | 1 |
| MX731012106PS | 100 | 0 ÷ 1.6 | G1/2 | CL1 | 1 |
| MX731012205PS | 100 | 0 ÷ 2.5 | G1/2 | CL1 | 1 |
| MX731012004PS | 100 | 0 ÷ 4 | G1/2 | CL1 | 1 |
| MX731012006PS | 100 | 0 ÷ 6 | G1/2 | CL1 | 1 |
| MX731012010PS | 100 | 0 ÷ 10 | G1/2 | CL1 | 1 |
| MX731012016PS | 100 | 0 ÷ 16 | G1/2 | CL1 | 1 |
| MX731012025PS | 100 | 0 ÷ 25 | G1/2 | CL1 | 1 |
| MX731012040PS | 100 | 0 ÷ 40 | G1/2 | CL1 | 1 |
| MX731012060PS | 100 | 0 ÷ 60 | G1/2 | CL1 | 1 |
| MX731012100PS | 100 | 0 ÷ 100 | G1/2 | CL1 | 1 |
| MX731012160PS | 100 | 0 ÷ 160 | G1/2 | CL1 | 1 |
| MX731012250PS | 100 | 0 ÷ 250 | G1/2 | CL1 | 1 |
| MX731012400PS | 100 | 0 ÷ 400 | G1/2 | CL1 | 1 |
| MX731012600PS | 100 | 0 ÷ 600 | G1/2 | CL1 | 1 |



Dati tecnici manometri a secco attacco radiale (serie MXX82)

Gauges bottom connection technical data (MXX82 series)

Technischen Daten der Manometer radial Angriff (Serie MXX82)

Applicazioni

Adatti per tutti gli impieghi dove esistono processi corrosivi. Tutte le applicazioni particolari (attacchi, quadranti, scale non normalizzate) possono essere risolte dalle nostre officine. Ampia disponibilità di magazzino.

Descrizione

Manometro costruito secondo Norme UNI EN 837.1 TUTTO INOX cassa AISI 304 IP65 dn 63 - 100 mm. Perno e movimento in AISI 316 attacco RADIALE (ISO 228).

Per d63: trasparente in policarbonato, quadrante in alluminio fondo bianco scala BAR, nera e PSI rossa (doppia scala esclusi mano vuotometri) Classe di precisione 2,5 - 1,6% - Lancetta in Alluminio. Per d100: trasparente in vetro stratificato di sicurezza, con tappo posteriore di sicurezza scala in BAR classe di precisione 1,0% - lancetta in alluminio micrometrica aggiustabile.

Temperatura d'esercizio

Ambiente -30 / +65 °C
Processo -40 / +180 °C

Pressione d'esercizio

Costante 75% - Variabile 60% - Sovrapressione 25% fino a 60 bar, 15% oltre per DN100, NON AMMESSA per DN63

Varianti d63

Scale Normalizzate: Vuotometro -1 / 0 Bar+CmHg; Mano-vuotometro -1+0,6; -1+1,5; -1+3; -1+5; -1+9; -1+15 solo Bar; 0,6; 1; 1,6; 2,5; 4; 6; 10; 12; 16; 25; 40; 60; 100; 160; 250; 315; 400 Bar + Psi

Varianti d100

Scale Normalizzate: -1 / 0; -1+0,6; -1+1,5; -1+3; -1+5; -1+9; -1+15; 1; 1,6; 2,5; 4; 6; 10; 16; 25; 40; 60; 100; 160; 250; 400; 600; 1000; 1600 bar

Opzioni prodotto

Filetto NPT ANSI B.1.20.1 con o senza glicerina, Sgrassatura uso ossigeno, scale e/o attacchi personalizzati, loghi, settori colorati, vetro di sicurezza (d100), esecuzione SOLID FRONT (d100), separatori (d100), contatti elettrici (d100), attacco radiale ad ore 3/9/12.

Applications

Suitable for corrosive process gas or liquid. With liquid filled case for applications with high dynamic pressure pulsations or vibrations. Chemical/petrol-chemical, power stations, mining, on- and offshore, environmental technology, mechanical engineering and plant construction. Our workshop is able to solve all your request.

Description

All stainless steel pressure gauge made according UNI EN 837.1 norms case AISI 304 dial 63-100 mm. Stainless steel AISI 316 movement and pivot BOTTOM (ISO 228) connection.

For d63: - Aluminum dial White background Black BAR scale and Red PSI one (double scale except compound gauge) - Accuracy 2,5, 1,6% - Aluminum index.
For d100: safety glass window with back blow out cap, aluminum dial white background black BAR scale, accuracy 1.0% - Micrometric adjustable aluminum index.

Working temperature

Environment -22 / +149 °F
Process -40 / +356 °F

Working pressure

Steady 75% - Variable 60% - Overpressure 25% until 60 bar, 15% over for DN100, NOT ADMITTED for DN63

Variants d63

Normalized scale: gauge compound -1 / 0 Bar+CmHg; Water pressure gauge -1+0,6; -1+1,5; -1+3; -1+5; -1+9; -1+15 solo Bar; 0,6; 1; 1,6; 2,5; 4; 6; 10; 12; 16; 25; 40; 60; 100; 160; 250; 315; 400 Bar + Psi

Variants d100

Normalized scale: -1 / 0; -1+0,6; -1+1,5; -1+3; -1+5; -1+9; -1+15; 1; 1,6; 2,5; 4; 6; 10; 16; 25; 40; 60; 100; 160; 250; 400; 600; 1000; 1600 bar

Product options

NPT ANSI B.1.20.1 thread, With or without glycerine, OXYGENE SERVICE customize range, scale or logo; Colored sector; SAFETY glass, SOLID FRONT production, radial connection 3/9/12 hours.

Anwendungen

Geeignet für alle Anwendungen, bei denen es korrosiven Prozessen. Alle spezielle Anwendungen (Ports, Zifferblätter, Skalen Nicht-Standard) können von unseren Workshops gelöst werden. Die weite Verfügbarkeit von Lager.

Beschreibung

Gebaut nach UNI EN 837,1, komplett Edelstahl AISI 304 IP65 Gehäuse DN 63 bis 100 mm. Stift und Bewegung in AISI 316, RADIAL Angriff (ISO 228).

Für d63: aus transparentem Polycarbonat, Aluminium-Zifferblatt mit weißem Hintergrund, Maßstab BAR schwarz und rot PSI (zwei Skalen Vakuummeter ausgeschlossen). Genauigkeitsklasse 2,5 bis 1,6%, - Aluminium Hand.
Für d100: transparent VSG, mit Kappe posteriore Sicherheit, Skalierbarkeit BAR, Genauigkeitsklasse 1,0% - hand Aluminium Feineinstellung.

Betriebstemperatur

Umwelt -30 / +65 °C
Prozess -40 / +180 °C

Betriebsdruck

Konstant 75% - Variable 60% - 25% Überdruck bis 60 bar, mehr als 15% für dn100. dn63: Überdruck NICHT ERLAUBT

Varianten D63

Maßstab normalisierten Vakuummeter -1 / 0 Bar+CmHg; Mano-Vakuummeter -1+0,6; -1+1,5; -1+3; -1+5; -1+9; -1+15 nur Bar; 0,6; 1; 1,6; 2,5; 4; 6; 10; 12; 16; 25; 40; 60; 100; 160; 250; 315; 400 Bar + Psi

Varianten D100

Maßstab normalisierten -1 / 0; -1+0,6; -1+1,5; -1+3; -1+5; -1+9; -1+15; 1; 1,6; 2,5; 4; 6; 10; 16; 25; 40; 60; 100; 160; 250; 400; 600; 1000; 1600 bar

Produkt-Optionen

Gewinde NPT ANSI B.1.20.1 mit oder ohne Glycerin, Entfetten Verwendung Sauerstoff, Treppen Angriffen e7o individuelle Logos, farbige Einheiten, Sicherheitsglas (d100), läuft SOLID FRONT (d100), Abscheider (d100), elektrische Kontakte (d100), Stunden 3/9/12 Stunden.

MXX 82



Manometri a secco attacco radiale

Gauges bottom connection
Manometer radial Angriff

| Ø | A | B | D | D1 | H | G" | CH | Kg |
|-----|----|----|-----|-----|----|------|----|-------|
| 63 | 10 | 31 | 62 | 66 | 54 | G1/4 | 14 | 0.136 |
| 100 | 28 | 59 | 101 | 110 | 86 | G1/2 | 22 | 1 |

| Code/Code | Ø | Scala (bar) Range | Attacco "Connection" | Precisione Accuracy | 📦 |
|---------------|----|-------------------|----------------------|---------------------|---|
| MXX826314099R | 63 | -1 ÷ 0 | G1/4 | CL1.6 | 1 |
| MXX826314Z06R | 63 | 0 ÷ 0.6 | G1/4 | CL1.6 | 1 |
| MXX826314001R | 63 | 0 ÷ 1 | G1/4 | CL1.6 | 1 |
| MXX826314106R | 63 | 0 ÷ 1.6 | G1/4 | CL1.6 | 1 |
| MXX826314205R | 63 | 0 ÷ 2.5 | G1/4 | CL1.6 | 1 |
| MXX826314004R | 63 | 0 ÷ 4 | G1/4 | CL1.6 | 1 |
| MXX826314006R | 63 | 0 ÷ 6 | G1/4 | CL1.6 | 1 |
| MXX826314010R | 63 | 0 ÷ 10 | G1/4 | CL1.6 | 1 |
| MXX826314016R | 63 | 0 ÷ 16 | G1/4 | CL1.6 | 1 |
| MXX826314025R | 63 | 0 ÷ 25 | G1/4 | CL1.6 | 1 |
| MXX826314040R | 63 | 0 ÷ 40 | G1/4 | CL1.6 | 1 |
| MXX826314060R | 63 | 0 ÷ 60 | G1/4 | CL1.6 | 1 |
| MXX826314100R | 63 | 0 ÷ 100 | G1/4 | CL1.6 | 1 |
| MXX826314160R | 63 | 0 ÷ 160 | G1/4 | CL1.6 | 1 |
| MXX826314250R | 63 | 0 ÷ 250 | G1/4 | CL1.6 | 1 |
| MXX826314400R | 63 | 0 ÷ 400 | G1/4 | CL1.6 | 1 |
| MXX826314600R | 63 | 0 ÷ 600 | G1/4 | CL1.6 | 1 |

new

new

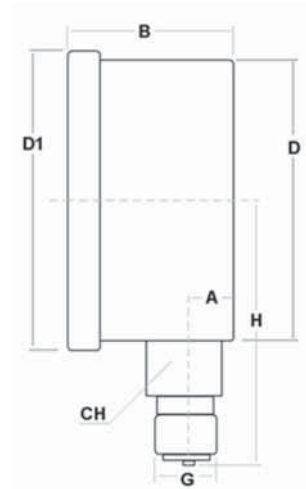
new

new

new

new

| | | | | | |
|---------------|-----|----------|------|-------|---|
| MXX821012099R | 100 | -1 ÷ 0 | G1/2 | CL1.0 | 1 |
| MXX821012115R | 100 | -1 ÷ 1.5 | G1/2 | CL1.0 | 1 |
| MXX821012903R | 100 | -1 ÷ 3 | G1/2 | CL1.0 | 1 |
| MXX821012905R | 100 | -1 ÷ 5 | G1/2 | CL1.0 | 1 |
| MXX821012909R | 100 | -1 ÷ 9 | G1/2 | CL1.0 | 1 |
| MXX821012Z06R | 100 | 0 ÷ 0.6 | G1/2 | CL1.0 | 1 |
| MXX821012001R | 100 | 0 ÷ 1 | G1/2 | CL1.0 | 1 |
| MXX821012106R | 100 | 0 ÷ 1.6 | G1/2 | CL1.0 | 1 |
| MXX821012205R | 100 | 0 ÷ 2.5 | G1/2 | CL1.0 | 1 |
| MXX821012004R | 100 | 0 ÷ 4 | G1/2 | CL1.0 | 1 |
| MXX821012006R | 100 | 0 ÷ 6 | G1/2 | CL1.0 | 1 |
| MXX821012010R | 100 | 0 ÷ 10 | G1/2 | CL1.0 | 1 |
| MXX821012016R | 100 | 0 ÷ 16 | G1/2 | CL1.0 | 1 |
| MXX821012025R | 100 | 0 ÷ 25 | G1/2 | CL1.0 | 1 |
| MXX821012040R | 100 | 0 ÷ 40 | G1/2 | CL1.0 | 1 |
| MXX821012060R | 100 | 0 ÷ 60 | G1/2 | CL1.0 | 1 |
| MXX821012100R | 100 | 0 ÷ 100 | G1/2 | CL1.0 | 1 |
| MXX821012160R | 100 | 0 ÷ 160 | G1/2 | CL1.0 | 1 |
| MXX821012250R | 100 | 0 ÷ 250 | G1/2 | CL1.0 | 1 |
| MXX821012400R | 100 | 0 ÷ 400 | G1/2 | CL1.0 | 1 |
| MXX821012600R | 100 | 0 ÷ 600 | G1/2 | CL1.0 | 1 |



Manometri e vuotometri interamente in INOX

Gauges and vacuum gauges complete INOX

Manometer und Vakuummeter vollständig Edelstahl

Dati tecnici manometri a secco attacco posteriore (serie MXX83)

Gauges back connection technical data (MXX83 series)

Technischen Daten der Manometer zuruck Angriff (Serie MXX83)

Applicazioni

Adatti per tutti gli impieghi dove esistono processi corrosivi. Tutte le applicazioni particolari (attacchi, quadranti, scale non normalizzate) possono essere risolte dalle nostre officine. Ampia disponibilità di magazzino.

Applications

Suitable for corrosive process gas or liquid. With liquid filled case for applications with high dynamic pressure pulsations or vibrations. Chemical/petrol-chemical, power stations, mining, on- and offshore, environmental technology, mechanical engineering and plant construction. Our workshop is able to solve all your request.

Anwendungen

Geeignet für alle Anwendungen, bei denen es korrosiven Prozessen. Alle spezielle Anwendungen (Ports, Zifferblätter, Skalen Nicht-Standard) können von unseren Workshops gelöst werden. Die weite Verfügbarkeit von Lager.

Descrizione

Manometro costruito secondo Norme UNI EN 837.1 TUTTO INOX cassa AISI 304 IP65 dn 63 mm trasparente in policarbonato. Perno e movimento in AISI 316 attacco POSTERIORE (ISO228). Quadrante in alluminio fondo bianco scala BAR nera e PSI rossa (doppia scala esclusi mano vuotometri). Classe di precisione 2,5 - 1,6% - Lancetta in Alluminio.

Description

Pressure gauge made according UNI EN 837.1 norms Stainless steel case AISI 304 dial 63 mm. BRASS movement and pivot BACK (ISO 228) connection - Aluminium dial White background Black BAR scale and Red PSI one (double scale except compound gauge). Accuracy 2,5, 1,6% - Aluminium index.

Beschreibung

Gebaut nach UNI EN 837,1, komplett Edelstahl AISI 304 Gehäuse IP65 dn 63 mm. Stift und Bewegung in AISI 316, ZURÜCK (ISO 228) Angriff, transparentem Polycarbonat, Aluminium-Zifferblatt mit weißem Hintergrund, Maßstab BAR schwarz und rot PSI (zwei Skalen Vakuummeter ausgenommen). Genauigkeitsklasse 2,5 bis 1,6%, Aluminium Hand.

Temperatura d'esercizio

Ambiente -30 / +65 °C
Processo -40 / +180 °C

Working temperature

Environment -22 / +149 °F
Process -40 / +356 °F

Betriebstemperatur

Umwelt -30 / +65 °C
Prozess -40 / +180 °C

Pressione d'esercizio

Costante 75% - Variabile 60%
Sovrappressione NON AMMESSA

Working pressure

Steady 75% - Variable 60%
Overpressure NOT ADMITTED

Betriebsdruck

Konstant 75% - Variable 60%
Überdruck NICHT ERLAUBT

Varianti

Scale Normalizzate: Vuotometro -1 / 0 Bar+CmHg; Mano-vuotometro -1+0,6; -1+1,5; -1+3; -1+5; -1+9; -1+15 solo Bar; 0,6; 1; 1,6; 2,5; 4; 6; 10; 12; 16; 25; 40; 60; 100; 160; 250; 315; 400 Bar + Psi

Variants d63

Normalized scale: gauge compound -1 / 0 Bar+CmHg; Water pressure gauge -1+0,6; -1+1,5; -1+3; -1+5; -1+9; -1+15 solo Bar; 0,6; 1; 1,6; 2,5; 4; 6; 10; 12; 16; 25; 40; 60; 100; 160; 250; 315; 400 Bar + Psi

Varianten D63

Maßstab normalisierten Vakuummeter -1 / 0 Bar+CmHg; Mano-Vakuummeter -1+0,6; -1+1,5; -1+3; -1+5; -1+9; -1+15 nur Bar; 0,6; 1; 1,6; 2,5; 4; 6; 10; 12; 16; 25; 40; 60; 100; 160; 250; 315; 400 Bar + Psi

Opzioni prodotto

Filetto NPT ANSI B.1.20.1 con o senza glicerina, sgrassatura uso ossigeno, scale e/o attacchi personalizzati, loghi, settori colorati.

Product options

NPT ANSI B.1.20.1 thread, With or without glycerin, OXYGEN SERVICE, customize range, Scale or logo; Colored sector.

Produkt-Optionen

Gewinde NPT ANSI B.1.20.1 mit oder ohne Glycerin, Entfetten Verwendung Sauerstoff, greift Treppen und/oder individuelle Logos, farbigen Sektoren.

MXX 83

new

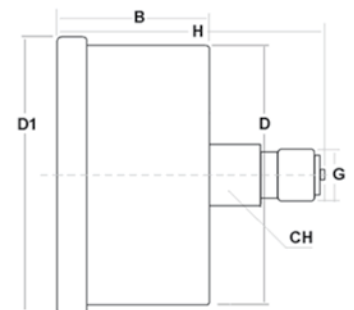


Manometri a secco attacco posteriore

Gauges back connection
Manometer zuruck Angriff

| Ø | B | D | D1 | H | G" | CH | | Kg |
|----|----|----|----|----|------|----|--|-------|
| 63 | 29 | 62 | 68 | 56 | G1/4 | 14 | | 0.109 |

| Codice/Code | Ø | Scala (bar) Range | Attacco" Connection" | Precisione Accuracy | |
|---------------|----|-------------------|----------------------|---------------------|---|
| MXX836314099P | 63 | -1 ÷ 0 | G1/4 | CL1.6 | 1 |
| MXX836314001P | 63 | 0 ÷ 1 | G1/4 | CL1.6 | 1 |
| MXX836314106P | 63 | 0 ÷ 1.6 | G1/4 | CL1.6 | 1 |
| MXX836314205P | 63 | 0 ÷ 2.5 | G1/4 | CL1.6 | 1 |
| MXX836314004P | 63 | 0 ÷ 4 | G1/4 | CL1.6 | 1 |
| MXX836314006P | 63 | 0 ÷ 6 | G1/4 | CL1.6 | 1 |
| MXX836314010P | 63 | 0 ÷ 10 | G1/4 | CL1.6 | 1 |
| MXX836314016P | 63 | 0 ÷ 16 | G1/4 | CL1.6 | 1 |
| MXX836314025P | 63 | 0 ÷ 25 | G1/4 | CL1.6 | 1 |
| MXX836314040P | 63 | 0 ÷ 40 | G1/4 | CL1.6 | 1 |
| MXX836314060P | 63 | 0 ÷ 60 | G1/4 | CL1.6 | 1 |
| MXX836314100P | 63 | 0 ÷ 100 | G1/4 | CL1.6 | 1 |
| MXX836314160P | 63 | 0 ÷ 160 | G1/4 | CL1.6 | 1 |
| MXX836314250P | 63 | 0 ÷ 250 | G1/4 | CL1.6 | 1 |
| MXX836314400P | 63 | 0 ÷ 400 | G1/4 | CL1.6 | 1 |



Dati tecnici manometri a secco attacco posteriore con flangia 3 fori (serie MXX84)

Gauges back connection with 3 holes flange technical data (MXX84 series)
Technischen Daten der Manometer zuruck Angriff mit Paneelring (Serie MXX84)

Applicazioni

Adatti per tutti gli impieghi dove esistono processi corrosivi. Tutte le applicazioni particolari (attacchi, quadranti, scale non normalizzate) possono essere risolte dalle nostre officine. Ampia disponibilità di magazzino.

Applications

Suitable for corrosive process gas or liquid. With liquid filled case for applications with high dynamic pressure pulsations or vibrations. Chemical/petrol-chemical, power stations, mining, on- and offshore, environmental technology, mechanical engineering and plant construction. Our workshop is able to solve all your request.

Anwendungen

Geeignet für alle Anwendungen, bei denen es korrosiven Prozessen. Alle spezielle Anwendungen (Ports, Zifferblätter, Skalen Nicht-Standard) können von unseren Workshops gelöst werden. Die weite Verfügbarkeit von Lager.

Descrizione

Manometro costruito secondo Norme UNI EN 837.1 TUTTO INOX cassa AISI 304 IP65 dn 63 mm trasparente in policarbonato. Perno e movimento in AISI 316 attacco POSTERIORE con FLANGIA (ISO 228). Quadrante in alluminio fondo bianco scala BAR nera e PSI rossa (doppia scala esclusi mano vuotometri). Classe di precisione 2,5 - 1,6% - Lancetta in Alluminio

Description

All stainless steel pressure gauge made according UNI EN 837.1 norms case AISI 304 dial 63 mm. Stainless steel AISI 316 movement and pivot BACK (ISO 228) connection with panel FLANGE - Aluminum dial White background Black BAR scale and Red PSI one (double scale except compoud gauge) Accuracy 2,5, 1,6% - Aluminum index

Beschreibung

Gebaut nach UNI EN 837.1, komplett Edelstahl AISI 304 Gehäuse IP65 dn 63 mm. Stift und Bewegung in AISI 316, ZURÜCK (ISO 228). Angriff mit Frontring, transparentem Polycarbonat, Aluminium-Zifferblatt mit weißem Hintergrund, Maßstab BAR schwarz und rot PSI (zwei Skalen Vakuummeterausgeschlossen). Genauigkeitsklasse 2,5 bis 1,6%, - Aluminium Hand

Temperatura d'esercizio

Ambiente -30 / +65 °C
Processo -40 / +180 °C

Working temperature

Environment -22 / +149 °F
Process -40 / +356 °F

Betriebstemperatur

Umwelt -30 / +65 °C
Prozess -40 / +180 °C

Pressione d'esercizio

Costante 75% - Variabile 60%
Sovrappressione NON AMMESSA

Working pressure

Steady 75% - Variable 60%
Overpressure NOT ADMITTED

Betriebsdruck

Konstant 75% - Variable 60%
Überdruck NICHT ERLAUBT

Varianti

Scale Normalizzate: Vuotometro -1 / 0 Bar+CmHg; Manovuotometro -1+0,6; -1+1,5; -1+3; -1+5; -1+9; -1+15 solo Bar; 0,6; 1,6; 2,5; 4; 6; 10; 12; 16; 25; 40; 60; 100; 160; 250; 315; 400 Bar + Psi

Variants

Normalized scale: gauge compound -1 / 0 Bar+CmHg; Water pressure gauge -1+0,6; -1+1,5; -1+3; -1+5; -1+9; -1+15 solo Bar; 0,6; 1; 1,6; 2,5; 4; 6; 10; 12; 16; 25; 40; 60; 100; 160; 250; 315; 400 Bar + Psi

Varianten

Maßstab normalisierten Vakuummeter -1 / 0 Bar+CmHg; Manovuotometer -1+0,6; -1+1,5; -1+3; -1+5; -1+9; -1+15 nur Bar; 0,6; 1; 1,6; 2,5; 4; 6; 10; 12; 16; 25; 40; 60; 100; 160; 250; 315; 400 Bar + Ps

Opzioni prodotto

Filetto NPT ANSI B.1.20.1 - Sgrassatura uso ossigeno, scale e/o attacchi personalizzati, loghi, settori colorati.

Product options

NPT ANSI B.1.20.1 thread, With or without glycerine, OXYGENE SERVICE customize range, scale or logo; Colored sector.

Produkt-Optionen

Gewinde NPT ANSI B.1.20.1 mit oder ohne Glycerin, Entfetten Verwendung Sauerstoff, greift Treppen und/oder individuelle Logos, farbigen Sektoren.

MXX **84**

new

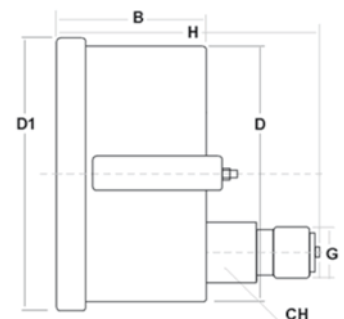


Manometri a secco attacco posteriore flangia 3 fori

Gauges back connection with 3 holes flange
Manometer zuruck Angriff mit Paneelring

| Ø | B | D | D1 | H | G" | CH | Kg |
|----|----|----|----|----|------|----|-------|
| 63 | 29 | 62 | 83 | 56 | G1/4 | 14 | 0,153 |

| Codice/Code | Ø | Scala (bar) Range | Attacco " Connection" | Precisione Accuracy | Icon |
|---------------|----|-------------------|-----------------------|---------------------|------|
| MXX846314099F | 63 | -1 ÷ 0 | G1/4 | CL1.6 | 1 |
| MXX846314001F | 63 | 0 ÷ 1 | G1/4 | CL1.6 | 1 |
| MXX846314106F | 63 | 0 ÷ 1,6 | G1/4 | CL1.6 | 1 |
| MXX846314205F | 63 | 0 ÷ 2,5 | G1/4 | CL1.6 | 1 |
| MXX846314004F | 63 | 0 ÷ 4 | G1/4 | CL1.6 | 1 |
| MXX846314006F | 63 | 0 ÷ 6 | G1/4 | CL1.6 | 1 |
| MXX846314010F | 63 | 0 ÷ 10 | G1/4 | CL1.6 | 1 |
| MXX846314016F | 63 | 0 ÷ 16 | G1/4 | CL1.6 | 1 |
| MXX846314025F | 63 | 0 ÷ 25 | G1/4 | CL1.6 | 1 |
| MXX846314040F | 63 | 0 ÷ 40 | G1/4 | CL1.6 | 1 |
| MXX846314060F | 63 | 0 ÷ 60 | G1/4 | CL1.6 | 1 |
| MXX846314100F | 63 | 0 ÷ 100 | G1/4 | CL1.6 | 1 |
| MXX846314160F | 63 | 0 ÷ 160 | G1/4 | CL1.6 | 1 |
| MXX846314250F | 63 | 0 ÷ 250 | G1/4 | CL1.6 | 1 |
| MXX846314400F | 63 | 0 ÷ 400 | G1/4 | CL1.6 | 1 |



Dati tecnici manometri glicerina attacco radiale (serie MXX92)

Gauges liquid fillable bottom connection technical data (MXX92 series)

Technischen Daten der Manometer Glycerin radial Angriff (Serie MXX92)

Applicazioni

Adatti per tutti gli impieghi dove esistono processi corrosivi. Tutte le applicazioni particolari (attacchi, quadranti, scale non normalizzate) possono essere risolte dalle nostre officine. Ampia disponibilità di magazzino.

Applications

Suitable for corrosive process gas or liquid. With liquid filled case for applications with high dynamic pressure pulsations or vibrations. Chemical/petrol-chemical, power stations, mining, on- and offshore, environmental technology, mechanical engineering and plant construction. Our workshop is able to solve all your request.

Anwendungen

Geeignet für alle Anwendungen, bei denen es korrosiven Prozessen. Alle spezielle Anwendungen (Ports, Zifferblätter, Skalen Nicht-Standard) können von unseren Workshops gelöst werden. Die weite Verfügbarkeit von Lager.

Descrizione

Manometro costruito secondo Norme UNI EN 837.1 TUTTO INOX cassa AISI 304 IP65 dn 63 - 100 mm. Perno e movimento in AISI 316 attacco RADIALE (ISO 228).

Per d63: trasparente in policarbonato, quadrante in alluminio fondo bianco scala BAR, nera e PSI rossa (doppia scala esclusi mano vuotometri). Classe di precisione 2,5 - 1,6% Lancetta in Alluminio; Per d100: trasparente in vetro stratificato di sicurezza, con tappo posteriore di sicurezza scala in BAR classe di precisione 1.0% - lancetta in alluminio micrometrica aggiustabile.

Description

All stainless steel pressure gauge made according UNI EN 837.1 norms case AISI 304 dial 63-100 mm. Stainless steel AISI 316 movement and pivot BOTTOM (ISO 228) connection.

For d63: - Aluminum dial White background Black BAR scale and Red PSI one (double scale except compound gauge) - Accuracy 2,5, 1,6% - Aluminum index.

For d100: safety glass window with back blow out cap, aluminum dial white background black BAR scale, accuracy 1.0% - Micrometric adjustable aluminum index.

Beschreibung

Gebaut nach UNI EN 837.1, komplett Edelstahl AISI 304 Gehäuse IP65 dn 63 - 100 mm. Stift und Bewegung in AISI 316, RADIAL Angriff (ISO 228). Für d63: aus transparentem Polycarbonat, Aluminium-Zifferblatt mit weißem Hintergrund, Maßstab BAR schwarz und rot PSI (zwei Skalen Vakuummeter ausgeschlossen). Genauigkeitsklasse 2,5 bis 1,6%, Aluminium Hand; Für d100: transparent VSG, mit Zurückkappe Sicherheit, Skalierbarkeit BAR, Genauigkeitsklasse 1,0% - hand Aluminium Feineinstellung.

Temperatura d'esercizio

Ambiente -30 / +65 °C
Processo -40 / +180 °C

Working temperature

Environment -22 / +149 °F
Process -40 / +356 °F

Betriebstemperatur

Umwelt -30 / +65 °C
Prozess -40 / +180 °C

Pressione d'esercizio

Costante 75% - Variabile 60% - Sovrapressione 25% fino a 60 bar, 15% oltre per DN100, NON AMMESSA per DN63

Working pressure

Steady 75% - Variable 60% - Overpressure 25% until 60 bar, 15% over for DN100, NOT ADMITTED for DN63

Betriebsdruck

Konstant 75% - Variable 60% - 25% Überdruck bis 60 bar, mehr als 15% für dn100. dn63: Überdruck NICHT ERLAUBT

Varianti d63

Scale Normalizzate: Vuotometro -1 / 0 Bar+CmHg; Mano-vuotometro -1+0,6; -1+1,5; -1+3; -1+5; -1+9; -1+15 solo Bar; 0,6; 1; 1,6; 2,5; 4; 6; 10; 12; 16; 25; 40; 60; 100; 160; 250; 315; 400 Bar + Psi

Variants d63

Normalized scale: gauge compound -1 / 0 Bar+CmHg; Water pressure gauge -1+0,6; -1+1,5; -1+3; -1+5; -1+9; -1+15 solo Bar; 0,6; 1; 1,6; 2,5; 4; 6; 10; 12; 16; 25; 40; 60; 100; 160; 250; 315; 400 Bar + Psi

Varianten D63

Maßstab normalisierten Vakuummeter -1 / 0 Bar+CmHg; Mano-Vakuummeter -1+0,6; -1+1,5; -1+3; -1+5; -1+9; -1+15 nur Bar; 0,6; 1; 1,6; 2,5; 4; 6; 10; 12; 16; 25; 40; 60; 100; 160; 250; 315; 400 Bar + Psi

Varianti d100

Scale Normalizzate: -1 / 0; -1+0,6; -1+1,5; -1+3; -1+5; -1+9; -1+15; 1; 1,6; 2,5; 4; 6; 10; 12; 16; 25; 40; 60; 100; 160; 250; 400; 600; 1000; 1600 bar

Variants d100

Normalized scale: -1 / 0; -1+0,6; -1+1,5; -1+3; -1+5; -1+9; -1+15; 1; 1,6; 2,5; 4; 6; 10; 12; 16; 25; 40; 60; 100; 160; 250; 400; 600; 1000; 1600 bar

Varianten D100

Maßstab normalisierten -1 / 0; -1+0,6; -1+1,5; -1+3; -1+5; -1+9; -1+15; 1; 1,6; 2,5; 4; 6; 10; 12; 16; 25; 40; 60; 100; 160; 250; 400; 600; 1000; 1600 bar

Opzioni prodotto

Filetto NPT ANSI B.1.20.1 con o senza glicerina, Sgrassatura uso ossigeno, scale e/o attacchi personalizzati, loghi, settori colorati, vetro di sicurezza (d100), esecuzione SOLID FRONT (d100), separatori (d100), contatti elettrici (d100), attacco radiale ad ore 3/9/12.

Product options

NPT ANSI B.1.20.1 thread, With or without glycerine, OXYGENE SERVICE customize range, scale or logo; Colored sector; SAFETY glass, SOLID FRONT production, radial connection 3/9/12 hours.

Produkt-Optionen

Gewinde NPT ANSI B.1.20.1 mit oder ohne Glycerin, Entfetten Verwendung Sauerstoff, Treppen Angriffen und/oder individuelle Logos, farbige Einheiten, Sicherheitsglas (d100), läuft SOLID FRONT (d100), Abscheider (d100), elektrische Kontakte (d100), 3/9/12 Stunden.

MXX 92

new



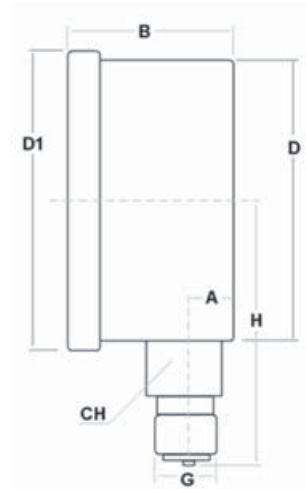
Manometri glicerina attacco radiale

Gauges liquid fillable bottom connection
Manometer Glycerin radial Angriff

| Ø | A | B | D | D1 | H | G" | CH | Kg |
|-----|----|----|-----|-----|----|------|----|-------|
| 63 | 10 | 31 | 62 | 66 | 54 | G1/4 | 14 | 0.136 |
| 100 | 28 | 59 | 101 | 110 | 86 | G1/2 | 22 | 1 |

| Codice/Code | Ø | Scala (bar) Range | Attacco" Connection" | Precisione Accuracy | |
|---------------|----|-------------------|----------------------|---------------------|---|
| MXX926314099R | 63 | -1 ÷ 0 | G1/4 | CL1.6 | 1 |
| MXX926314Z06R | 63 | 0 ÷ 0.6 | G1/4 | CL1.6 | 1 |
| MXX926314001R | 63 | 0 ÷ 1 | G1/4 | CL1.6 | 1 |
| MXX926314106R | 63 | 0 ÷ 1.6 | G1/4 | CL1.6 | 1 |
| MXX926314205R | 63 | 0 ÷ 2.5 | G1/4 | CL1.6 | 1 |
| MXX926314004R | 63 | 0 ÷ 4 | G1/4 | CL1.6 | 1 |
| MXX926314006R | 63 | 0 ÷ 6 | G1/4 | CL1.6 | 1 |
| MXX926314010R | 63 | 0 ÷ 10 | G1/4 | CL1.6 | 1 |
| MXX926314016R | 63 | 0 ÷ 16 | G1/4 | CL1.6 | 1 |
| MXX926314025R | 63 | 0 ÷ 25 | G1/4 | CL1.6 | 1 |
| MXX926314040R | 63 | 0 ÷ 40 | G1/4 | CL1.6 | 1 |
| MXX926314060R | 63 | 0 ÷ 60 | G1/4 | CL1.6 | 1 |
| MXX926314100R | 63 | 0 ÷ 100 | G1/4 | CL1.6 | 1 |
| MXX926314160R | 63 | 0 ÷ 160 | G1/4 | CL1.6 | 1 |
| MXX926314250R | 63 | 0 ÷ 250 | G1/4 | CL1.6 | 1 |
| MXX926314400R | 63 | 0 ÷ 400 | G1/4 | CL1.6 | 1 |
| MXX926314600R | 63 | 0 ÷ 600 | G1/4 | CL1.6 | 1 |

| | | | | | |
|---------------|-----|----------|------|-------|---|
| MXX921012099R | 100 | -1 ÷ 0 | G1/2 | CL1.0 | 1 |
| MXX921012115R | 100 | -1 ÷ 1.5 | G1/2 | CL1.0 | 1 |
| MXX921012903R | 100 | -1 ÷ 3 | G1/2 | CL1.0 | 1 |
| MXX921012905R | 100 | -1 ÷ 5 | G1/2 | CL1.0 | 1 |
| MXX921012909R | 100 | -1 ÷ 9 | G1/2 | CL1.0 | 1 |
| MXX921012206R | 100 | 0 ÷ 0.6 | G1/2 | CL1.0 | 1 |
| MXX921012001R | 100 | 0 ÷ 1 | G1/2 | CL1.0 | 1 |
| MXX921012106R | 100 | 0 ÷ 1.6 | G1/2 | CL1.0 | 1 |
| MXX921012205R | 100 | 0 ÷ 2.5 | G1/2 | CL1.0 | 1 |
| MXX921012004R | 100 | 0 ÷ 4 | G1/2 | CL1.0 | 1 |
| MXX921012006R | 100 | 0 ÷ 6 | G1/2 | CL1.0 | 1 |
| MXX921012010R | 100 | 0 ÷ 10 | G1/2 | CL1.0 | 1 |
| MXX921012016R | 100 | 0 ÷ 16 | G1/2 | CL1.0 | 1 |
| MXX921012025R | 100 | 0 ÷ 25 | G1/2 | CL1.0 | 1 |
| MXX921012040R | 100 | 0 ÷ 40 | G1/2 | CL1.0 | 1 |
| MXX921012060R | 100 | 0 ÷ 60 | G1/2 | CL1.0 | 1 |
| MXX921012100R | 100 | 0 ÷ 100 | G1/2 | CL1.0 | 1 |
| MXX921012160R | 100 | 0 ÷ 160 | G1/2 | CL1.0 | 1 |
| MXX921012250R | 100 | 0 ÷ 250 | G1/2 | CL1.0 | 1 |
| MXX921012400R | 100 | 0 ÷ 400 | G1/2 | CL1.0 | 1 |
| MXX921012600R | 100 | 0 ÷ 600 | G1/2 | CL1.0 | 1 |
| MXX921012M00R | 100 | 0 ÷ 1000 | G1/2 | CL1.0 | 1 |



MXX 99

new



Staffa posteriore per manometri glicerina tutto inox d.50-63

Back clamp for inox gauges liquid fillable back connec. d.50-63
Paneelblech für Manometer Glycerin INOX Ø63

| Codice/Code | Ø | |
|-------------|-------|---|
| MXX990063 | 50-63 | 1 |

Manometri e vuotometri interamente in INOX

Gauges and vacuum gauges complete INOX

Manometer und Vakuummeter vollständig Edelstahl

Dati tecnici manometri glicerina attacco posteriore (serie MXX93)

Gauges liquid fillable back connection technical data (MXX93 series)

Technischen Daten der Manometer Glycerin zuruck Angriff (Serie MXX93)

Applicazioni

Adatti per tutti gli impieghi dove esistono processi corrosivi. Tutte le applicazioni particolari (attacchi, quadranti, scale non normalizzate) possono essere risolte dalle nostre officine. Ampia disponibilità di magazzino.

Applications

Suitable for corrosive process gas or liquid. With liquid filled case for applications with high dynamic pressure pulsations or vibrations. Chemical/petrol-chemical, power stations, mining, on- and offshore, environmental technology, mechanical engineering and plant construction. Our workshop is able to solve all your request.

Anwendungen

Geeignet für alle Anwendungen, bei denen es korrosiven Prozessen. Alle spezielle Anwendungen (Ports, Zifferblätter, Skalen Nicht-Standard) können von unseren Workshops gelöst werden. Die weite Verfügbarkeit von Lager.

Descrizione

Manometro costruito secondo Norme UNI EN 837.1 TUTTO INOX cassa AISI 304 IP65 dn 63 mm trasparente in policarbonato. Perno e movimento in AISI 316 attacco POSTERIORE (ISO 228). Quadrante in alluminio fondo bianco scala BAR nera e PSI rossa (doppia scala esclusi mano vuotometri). Classe di precisione 2,5 - 1,6% - Lancetta in Alluminio.

Description

Pressure gauge made according UNI EN 837.1 norms Stainless steel case AISI 304 dial 63 mm. BRASS movement and pivot BACK (ISO 228) connection - Aluminum dial White background Black BAR scale and Red PSI one (double scale except compound gauge). Accuracy 2,5, 1,6% - Aluminum index.

Beschreibung

Gebaut nach UNI EN 837.1, komplett Edelstahl AISI 304 Gehäuse IP65 dn 63 mm. Stift und Bewegung in AISI 316, ZURÜCK (ISO 228) Angriff, transparentem Polycarbonat, Aluminium-Zifferblatt mit weißem Hintergrund, Maßstab BAR schwarz und rot PSI (zwei Skalen Vakuummeter ausgeschlossen). Genauigkeitsklasse 2,5 bis 1,6%, Aluminium Hand.

Temperatura d'esercizio

Ambiente -10 / +65 °C
Processo 0 / +75 °C

Working temperature

Environment +14 / +149 °F
Process +32 / +167 °

Betriebstemperatur

Umwelt -30 / +65 °C
Prozess -40 / +180 °C

Pressione d'esercizio

Costante 75% - Variabile 60%
Sovrappressione NON AMMESSA

Working pressure

Steady 75% - Variable 60%
Overpressure NOT ADMITTED

Betriebsdruck

Konstant 75% - Variable 60%
Überdruck NICHT ERLAUBT

Varianti

Scale Normalizzate: Vuotometro -1 / 0 Bar+CmHg; Manovuotometro -1+0,6; -1+1,5; -1+3; -1+5; -1+9; -1+15 solo Bar; 0,6; 1; 1,6; 2,5; 4; 6; 10; 12; 16; 25; 40; 60; 100; 160; 250; 315; 400 Bar + Psi

Variants D63

Normalized scale: gauge compound -1 / 0 Bar+CmHg; Water pressure gauge -1+0,6; -1+1,5; -1+3; -1+5; -1+9; -1+15 solo Bar; 0,6; 1; 1,6; 2,5; 4; 6; 10; 12; 16; 25; 40; 60; 100; 160; 250; 315; 400 Bar + Psi

Varianten D63

Maßstab normalisierten Vakuummeter -1 / 0 Bar+CmHg; Manovuotometro -1+0,6; -1+1,5; -1+3; -1+5; -1+9; -1+15 nur Bar; 0,6; 1; 1,6; 2,5; 4; 6; 10; 12; 16; 25; 40; 60; 100; 160; 250; 315; 400 Bar + Psi

Opzioni prodotto

Filetto NPT ANSI B.1.20.1 con o senza glicerina, sgrassatura uso ossigeno, scale e/o attacchi personalizzati, loghi, settori colorati.

Product options

NPT ANSI B.1.20.1 thread, With or without glycerine, OXYGEN SERVICE, customize range, Scale or logo; Colored sector.

Produkt-Optionen

Gewinde NPT ANSI B.1.20.1 mit oder ohne Glycerin, Entfetten Verwendung Sauerstoff, greift Treppen und/oder individuelle Logos, farbigen Sektoren.

MXX 93

new

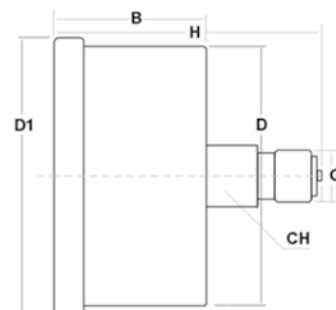


Manometri glicerina attacco posteriore

Gauges liquid fillable back connection
Manometer Glycerin zuruck Angriff

| Ø | B | D | D1 | H | G" | CH | Kg |
|----|----|----|----|----|------|----|-------|
| 63 | 29 | 62 | 68 | 56 | G1/4 | 14 | 0.109 |

| Codice/Code | Ø | Scala (bar) Range | Attacco" Connection" | Precisione Accuracy | Icon |
|---------------|----|-------------------|----------------------|---------------------|------|
| MXX936314099P | 63 | -1 ÷ 0 | G 1/4 | CL.1.6 | 1 |
| MXX936314001P | 63 | 0 ÷ 1 | G 1/4 | CL.1.6 | 1 |
| MXX936314106P | 63 | 0 ÷ 1.6 | G 1/4 | CL.1.6 | 1 |
| MXX936314205P | 63 | 0 ÷ 2.5 | G 1/4 | CL.1.6 | 1 |
| MXX936314004P | 63 | 0 ÷ 4 | G 1/4 | CL.1.6 | 1 |
| MXX936314006P | 63 | 0 ÷ 6 | G 1/4 | CL.1.6 | 1 |
| MXX936314010P | 63 | 0 ÷ 10 | G 1/4 | CL.1.6 | 1 |
| MXX936314016P | 63 | 0 ÷ 16 | G 1/4 | CL.1.6 | 1 |
| MXX936314025P | 63 | 0 ÷ 25 | G 1/4 | CL.1.6 | 1 |
| MXX936314040P | 63 | 0 ÷ 40 | G 1/4 | CL.1.6 | 1 |
| MXX936314060P | 63 | 0 ÷ 60 | G 1/4 | CL.1.6 | 1 |
| MXX936314100P | 63 | 0 ÷ 100 | G 1/4 | CL.1.6 | 1 |
| MXX936314160P | 63 | 0 ÷ 160 | G 1/4 | CL.1.6 | 1 |
| MXX936314250P | 63 | 0 ÷ 250 | G 1/4 | CL.1.6 | 1 |
| MXX936314400P | 63 | 0 ÷ 400 | G 1/4 | CL.1.6 | 1 |



Dati tecnici manometri glicerina attacco posteriore con flangia 3 fori (serie MXX94)

Gauges liquid fillable back connection with 3 holes flange technical data (MXX94 series)

Technischen Daten der Manometer Glycerin zuruck Angriff mit Paneelring (Serie MXX94)

Applicazioni

Adatti per tutti gli impieghi dove esistono processi corrosivi. Tutte le applicazioni particolari (attacchi, quadranti, scale non normalizzate) possono essere risolte dalle nostre officine. Ampia disponibilità di magazzino.

Applications

Suitable for corrosive process gas or liquid. With liquid filled case for applications with high dynamic pressure pulsations or vibrations. Chemical/petrol-chemical, power stations, mining, on- and offshore, environmental technology, mechanical engineering and plant construction. Our workshop is able to solve all your request.

Anwendungen

Geeignet für alle Anwendungen, bei denen es korrosiven Prozessen. Alle spezielle Anwendungen (Ports, Zifferblätter, Skalen Nicht-Standard) können von unseren Workshops gelöst werden. Die weite Verfügbarkeit von Lager.

Descrizione

Manometro costruito secondo Norme UNI EN 837.1 TUTTO INOX cassa AISI 304 IP65 dn 63 mm trasparente in policarbonato. Perno e movimento in AISI 316 attacco POSTERIORE con FLANGIA (ISO 228). Quadrante in alluminio fondo bianco scala BAR nera e PSI rossa (doppia scala esclusi mano vuotometri). Classe di precisione 2,5 - 1,6% - Lancetta in Alluminio

Description

All stainless steel pressure gauge made according UNI EN 837.1 norms case AISI 304 dial 63 mm. Stainless steel AISI 316 movement and pivot BACK (ISO 228) connection with panel FLANGE - Aluminum dial White background Black BAR scale and Red PSI one (double scale except compound gauge) - Accuracy 2,5, 1,6% - Aluminum index

Beschreibung

Gebaut nach UNI EN 837.1, komplett Edelstahl AISI 304 Gehäuse IP65 dn 63 mm. Stift und Bewegung in AISI 316, ZURÜCK (ISO 228) Angriff mit Frontring, transparentem Polycarbonat, Aluminium-Zifferblatt mit weißem Hintergrund, Maßstab BAR schwarz und rot PSI (zwei Skalen Vakuummeter ausgeschlossen). Genauigkeitsklasse 2,5 bis 1,6%, Aluminium Hand;

Temperatura d'esercizio

Ambiente -10 / +65 °C
Processo 0 / +75 °C

Working temperature

Environment +14 / +149 °F
Process +32 / +167 °

Betriebstemperatur

Umwelt -30 / +65 °C
Prozess -0 / +75 °C

Pressione d'esercizio

Costante 75% - Variabile 60%
Sovrappressione NON AMMESSA

Working pressure

Steady 75% - Variable 60%
Overpressure NOT ADMITTED

Betriebsdruck

Konstant 75% - Variable 60%
Überdruck NICHT ERLAUBT

Varianti

Scale Normalizzate: Vuotometro -1 / 0 Bar+CmHg; Mano-vuotometro -1+0,6; -1+1,5; -1+3; -1+5; -1+9; -1+15 solo Bar; 0,6; 1; 1,6; 2,5; 4; 6; 10; 12; 16; 25; 40; 60; 100; 160; 250; 315; 400 Bar + Psi

Variants D63

Normalized scale: gauge compound -1 / 0 Bar+CmHg; Water pressure gauge -1+0,6; -1+1,5; -1+3; -1+5; -1+9; -1+15 solo Bar; 0,6; 1; 1,6; 2,5; 4; 6; 10; 12; 16; 25; 40; 60; 100; 160; 250; 315; 400 Bar + Psi

Varianten

Maßstab normalisierten Vakuummeter -1 / 0 Bar+CmHg; Mano-Vakuummeter -1+0,6; -1+1,5; -1+3; -1+5; -1+9; -1+15 nur Bar; 0,6; 1; 1,6; 2,5; 4; 6; 10; 12; 16; 25; 40; 60; 100; 160; 250; 315; 400 Bar + Psi

Opzioni prodotto

Filetto NPT ANSI B.1.20.1 - Sgrassatura uso ossigeno, scale e/o attacchi personalizzati, loghi, settori colorati.

Product options

NPT ANSI B.1.20.1 thread, With or without glycerine, OXYGENE SERVICE customize range, scale or logo; Colored sector.

Produkt-Optionen

Gewinde NPT ANSI B.1.20.1, Entfetten Verwendung Sauerstoff, greift Treppen und/oder individuelle Logos, farbigen Sektoren.

MXX 94

new

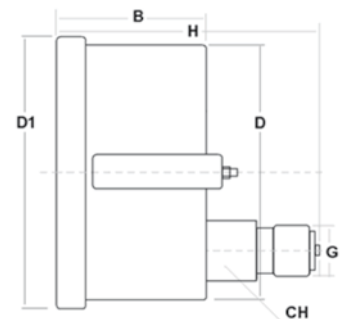


Manometri glicerina attacco posteriore flangia 3 fori

Gauges liquid fillable back connection with 3 holes flange
Manometer Glycerin zuruck Angriff mit Paneelring

| Ø | B | D | D1 | H | G" | CH | Kg |
|----|----|----|----|----|------|----|-------|
| 63 | 29 | 62 | 83 | 56 | G1/4 | 14 | 0.153 |

| Codice/Code | Ø | Scala (bar) Range | Attacco "Connection" | Precisione Accuracy | Icon |
|---------------|----|-------------------|----------------------|---------------------|------|
| MXX946314099F | 63 | -1 ÷ 0 | G1/4 | CL1.6 | 1 |
| MXX946314001F | 63 | 0 ÷ 1 | G1/4 | CL1.6 | 1 |
| MXX946314106F | 63 | 0 ÷ 1.6 | G1/4 | CL1.6 | 1 |
| MXX946314205F | 63 | 0 ÷ 2.5 | G1/4 | CL1.6 | 1 |
| MXX946314004F | 63 | 0 ÷ 4 | G1/4 | CL1.6 | 1 |
| MXX946314006F | 63 | 0 ÷ 6 | G1/4 | CL1.6 | 1 |
| MXX946314010F | 63 | 0 ÷ 10 | G1/4 | CL1.6 | 1 |
| MXX946314016F | 63 | 0 ÷ 16 | G1/4 | CL1.6 | 1 |
| MXX946314025F | 63 | 0 ÷ 25 | G1/4 | CL1.6 | 1 |
| MXX946314040F | 63 | 0 ÷ 40 | G1/4 | CL1.6 | 1 |
| MXX946314060F | 63 | 0 ÷ 60 | G1/4 | CL1.6 | 1 |
| MXX946314100F | 63 | 0 ÷ 100 | G1/4 | CL1.6 | 1 |
| MXX946314160F | 63 | 0 ÷ 160 | G1/4 | CL1.6 | 1 |
| MXX946314250F | 63 | 0 ÷ 250 | G1/4 | CL1.6 | 1 |
| MXX946314400F | 63 | 0 ÷ 400 | G1/4 | CL1.6 | 1 |



Dati tecnici regolatori-filtri-lubrificatori-gruppi FRL

Regulators-filters-lubricators-FRL units technical data

Technischen Daten der Wartungseinheiten Serie Metall

Regolatore di pressione con relieving

Pressione massima d'ingresso: 18 bar.
 Campo di regolazione: 0-12 bar, su richiesta 0-2, 0-4, 0-8 bar.
 Portata a 6 bar ΔP 1 bar: 1/8"-1/4" 850 NL/min., 3/8"-1/2" 2600 NL/min., 3/4"-1" 4600 NL/min.
 Temperatura max. a 10 bar: +50°C.
 Attacco manometro 1/8" per (1/8-1/4-3/8-1/2), 1/4" per (3/4-1")

Filtro

Fluido: aria compressa.
 Grado di filtrazione: 20 micron, a richiesta 4 o 50 micron.
 Scarico condensa: manuale/semiautomatico, a richiesta automatico.
 Capacità tazza cm³: 20 (1/8-1/4), 60 (3/8-1/2), 100 (3/4-1").
 Pressione massima d'ingresso: 18 bar.
 Pressione massima d'ingresso con scarico condensa automatico: 10 bar.
 Portata a 6 bar ΔP 1 bar: 1/8"-1/4" 1750 NL/min., 3/8"-1/2" 4300 NL/min., 3/4"-1" 11000 NL/min.
 Temperatura max a 10 bar: +50°C

Lubrificatore

Fluido: aria compressa.
 Capacità tazza cm³: 50 (1/8-1/4), 150 (3/8-1/2), 400 (3/4-1").
 Pressione massima d'ingresso: 18 bar.
 Tipo di lubrificazione: nebbia d'olio.
 Regolazione lubrificazione: mediante vite micrometrica.
 Portata a 6 bar ΔP 1 bar: 1/8"-1/4" 1700 NL/min., 3/8"-1/2" 4500 NL/min., 3/4"-1" 16000 NL/min.
 Temperatura max a 10 bar: +50°C

Filtro regolatore

Fluido: aria compressa.
 Grado di filtrazione: 20 micron, a richiesta 4 o 50 micron.
 Capacità tazza cm³: 20 (1/8-1/4), 60 (3/8-1/2), 100 (3/4-1").
 Scarico condensa: manuale/semiautomatico, a richiesta automatico.
 Pressione massima d'ingresso: 18 bar.
 Campo di regolazione: 0-12 bar, su richiesta 0-2, 0-4, 0-8 bar.
 Portata a 6 bar ΔP 1 bar: 1/8"-1/4" 850 NL/min., 3/8"-1/2" 2600 NL/min., 3/4"-1" 12000 NL/min.
 Temperatura max. a 10 bar: +50°C.
 Attacco manometro 1/8" per (1/8-1/4-3/8-1/2), 1/4" per (3/4-1")

Filtro regolatore + lubrificatore

Fluido: aria compressa.
 Grado di filtrazione: 20 micron, a richiesta 4 o 50 micron.
 Scarico condensa: manuale/semiautomatico, a richiesta automatico.
 Pressione massima d'ingresso: 18 bar.
 Pressione massima d'ingresso con scarico condensa automatico: 10 bar.
 Campo di regolazione: 0-12 bar, su richiesta 0-2, 0-4, 0-8 bar.
 Portata a 6 bar ΔP 1 bar: 1/8"-1/4" 700 NL/min., 3/8"-1/2" 2500 NL/min., 3/4"-1" 10000 NL/min.
 Temperatura max. a 10 bar: +50°C.
 Attacco manometro 1/8" per (1/8-1/4-3/8-1/2), 1/4" per (3/4-1")

Regulator with relieving

Maximum inlet pressure: 18 bar.
 Pressure adjusting range: 0-12 bar, on demand 0-2, 0-4, 0-8 bar.
 Flow rate at 6 bar ΔP 1 bar 1/8"-1/4" 850 NL/min., 3/8"-1/2" 2600 NL/min., 3/4"-1" 4600 NL/min.
 Maximum temperature at 10 bar: +50°C.
 Pressure gauge thread 1/8" for (1/8-1/4-3/8-1/2), 1/4" for (3/4-1")

Filter

Fluid: compressed air.
 Degree of filtration: 20 micron, on demand 4 or 50 micron.
 Condensate drain: manual/semiautomatic, on demand automatic.
 Bowl capacity cm³: 20 (1/8-1/4), 60 (3/8-1/2), 100 (3/4-1").
 Maximum inlet pressure: 18 bar.
 Maximum inlet pressure with automatic drain: 10 bar.
 Flow rate at 6 bar ΔP 1 bar: 1/8"-1/4" 1750 NL/min., 3/8"-1/2" 4300 NL/min., 3/4"-1" 11000 NL/min.
 Maximum temperature at 10 bar: +50°C

Lubricator

Fluid: compressed air.
 Bowl capacity cm³: 50 (1/8-1/4), 150 (3/8-1/2), 400 (3/4-1").
 Maximum inlet pressure: 18 bar.
 Type of lubrication: oil mist.
 Lubrication adjustment: means of a micrometer screw.
 Flow rate at 6 bar ΔP 1 bar: 1/8"-1/4" 1700 NL/min., 3/8"-1/2" 4500 NL/min., 3/4"-1" 16000 NL/min.
 Maximum temperature at 10 bar: +50°C

Filter regulator

Fluid: compressed air.
 Degree of filtration: 20 micron, on demand 4 or 50 micron.
 Bowl capacity cm³: 20 (1/8-1/4), 60 (3/8-1/2), 100 (3/4-1").
 Condensate drain: manual/semiautomatic, on demand automatic.
 Maximum inlet pressure: 18 bar.
 Pressure adjusting range: 0-12 bar, on demand 0-2, 0-4, 0-8 bar.
 Flow rate at 6 bar ΔP 1 bar: 1/8"-1/4" 850 NL/min., 3/8"-1/2" 2600 NL/min., 3/4"-1" 12000 NL/min.
 Maximum temperature at 10 bar: +50°C.
 Pressure gauge thread 1/8" for (1/8-1/4-3/8-1/2), 1/4" for (3/4-1")

Filter regulator + lubricator

Fluid: compressed air.
 Degree of filtration: 20 micron, on demand 4 or 50 micron.
 Condensate drain: manual/semiautomatic, on demand automatic.
 Maximum inlet pressure: 18 bar.
 Maximum inlet pressure with automatic drain: 10 bar.
 Pressure adjusting range: 0-12 bar, on demand 0-2, 0-4, 0-8 bar.
 Flow rate at 6 bar ΔP 1 bar: 1/8"-1/4" 7000 NL/min., 3/8"-1/2" 2500 NL/min., 3/4"-1" 10000 NL/min.
 Maximum temperature at 10 bar: +50°C.
 Pressure gauge thread 1/8" for (1/8-1/4-3/8-1/2), 1/4" for (3/4-1")

Druckregler

Maximaler Eingangsdruck: 18 bar.
 Regelbereich: 0-12 bar, auf Anfrage 0-2, 0-4, 0-8 bar.
 Durchfluss bei 6 bar ΔP 1 bar: 1/8"-1/4" 850 NL/min., 3/8"-1/2" 2600 NL/min., 3/4"-1" 4600 NL/min.
 Maximale Temperatur bei 10 bar: +50 °C.
 Manometer 1/8" für (1/8-1/4-3/8-1/2), 1/4" für (3/4-1")

Filter

Fluid: Druckluft.
 Abscheidegrad: 20 Mikron, auf Anfrage 4 oder 50 Mikron.
 Kondensatablass: manuell / halbautomatisch, auf Verlangen automatische.
 Behältervolumen cm³: 20 (1/8-1/4), 60 (3/8-1/2), 100 (3/4-1").
 Maximaler Eingangsdruck: 18 bar.
 Maximaler Eingangsdruck mit Kondensat-Automatik: 10 bar.
 Durchfluss bei 6 bar ΔP: 1 bar: 1/8"-1/4" 1750 NL/min., 3/8"-1/2" 4300 NL/min., 3/4"-1" 11000 NL/min.
 Maximale Temperatur bei 10 bar: +50 °C

Nebelöler

Fluid: Druckluft.
 Behältervolumen cm³: 50 (1/8-1/4), 150 (3/8-1/2), 400 (3/4-1").
 Maximaler Eingangsdruck: 18 bar.
 Art der Schmierung: Ölnebel.
 Öl-Regulierschraube: Mikrometerschraube.
 Durchfluss bei 6 bar ΔP 1 bar: 1/8"-1/4" 1700 NL/min., 3/8"-1/2" 4500 NL/min., 3/4"-1" 16000 NL/min.
 Maximale Temperatur bei 10 bar: +50 °C

Filterregler

Fluid: Druckluft.
 Filtration: 20 Mikron, auf Anfrage 4 oder 50 Mikron.
 Behältervolumen cm³: 20 (1/8-1/4), 60 (3/8-1/2), 100 (3/4-1").
 Kondensatablass: manuell / halbautomatisch, auf Verlangen automatische.
 Maximaler Eingangsdruck: 18 bar.
 Messbereiche: 0-12 bar, auf Anfrage 0-2, 0-4, 0-8 bar.
 Durchfluss bei 6 bar ΔP 1 bar: 1/8"-1/4" 850 NL/min., 3/8"-1/2" 2600 NL/min., 3/4"-1" 12000 NL/min.
 Maximale Temperatur bei 10 bar: +50 °C.
 Manometer 1/8" für (1/8-1/4-3/8-1/2), 1/4" für (3/4-1")

Filterregler + Nebelöler

Fluid: Druckluft.
 Filtration: 20 Mikron, auf Anfrage 4 oder 50 Mikron.
 Kondensatablass: manuell / halbautomatisch, auf Verlangen automatische.
 Maximaler Eingangsdruck: 18 bar.
 Maximaler Eingangsdruck mit Kondensat-Automatik: 10 bar.
 Einstellbereiche 0-12 bar, auf Anfrage 0-2, 0-4, 0-8 bar.
 Durchfluss bei 6 bar ΔP 1 bar: 1/8"-1/4" 7000 NL/min., 3/8"-1/2" 2500 NL/min., 3/4"-1" 10000 NL/min.
 Maximale Temperatur bei 10 bar: +50 °C.
 Manometer 1/8" für (1/8-1/4-3/8-1/2) 1/4" für (3/4-1")

| | MANOMÉTEREK | Pontosság | Típus | Nettó lista ár |
|---------------|---|-----------|---|-----------------------|
| MX721012004PF | MAN. D.100 0-4 PF.1/2 GLI.INOX | CL.1.0 | INOX házas, hátsó csatlakozású, peremes, csill. | 19 740,00 Ft |
| MX721012006PF | MAN. D.100 0-6 PF.1/2 GLI.INOX | CL.1.0 | INOX házas, hátsó csatlakozású, peremes, csill. | 19 740,00 Ft |
| MX721012010PF | MAN. D.100 0-10 PF.1/2 GLI.INOX | CL.1.0 | INOX házas, hátsó csatlakozású, peremes, csill. | 19 740,00 Ft |
| MX721012016PF | MAN. D.100 0-16 PF.1/2 GLI.INOX | CL.1.0 | INOX házas, hátsó csatlakozású, peremes, csill. | 19 740,00 Ft |
| MX721012025PF | MAN. D.100 0-25 PF.1/2 GLI.INOX | CL.1.0 | INOX házas, hátsó csatlakozású, peremes, csill. | 19 740,00 Ft |
| MX721012040PF | MAN. D.100 0-40 PF.1/2 GLI.INOX | CL.1.0 | INOX házas, hátsó csatlakozású, peremes, csill. | 19 740,00 Ft |
| MX721012060PF | MAN. D.100 0-60 PF.1/2 GLI.INOX | CL.1.0 | INOX házas, hátsó csatlakozású, peremes, csill. | 19 740,00 Ft |
| MX721012100PF | MAN. D.100 0-100 PF.1/2 GLI.INOX | CL.1.0 | INOX házas, hátsó csatlakozású, peremes, csill. | 19 740,00 Ft |
| MX721012160PF | MAN. D.100 0-160 PF.1/2 GLI.INOX | CL.1.0 | INOX házas, hátsó csatlakozású, peremes, csill. | 19 740,00 Ft |
| MX721012250PF | MAN. D.100 0-250 PF.1/2 GLI.INOX | CL.1.0 | INOX házas, hátsó csatlakozású, peremes, csill. | 19 740,00 Ft |
| MX721012400PF | MAN. D.100 0-400 PF.1/2 GLI.INOX | CL.1.0 | INOX házas, hátsó csatlakozású, peremes, csill. | 19 740,00 Ft |
| MX721012600PF | MAN. D.100 0-600 PF.1/2 GLI.INOX | CL.1.0 | INOX házas, hátsó csatlakozású, peremes, csill. | 19 740,00 Ft |
| MX990040P | STAFFA POST.PER MAN. MX71P DN40 | | | 860,00 Ft |
| MX990063P | STAFFA POST.PER MAN. MX71P DN50 DN63 | | | 1 110,00 Ft |
| MX990100P | STAFFA POST.PER MAN. MX71P DN100 | | | 1 930,00 Ft |
| MX724050PF | FLANGIA 3 FORI PER MANOMETRI D.40-50 INOX GLIC. | | | 1 670,00 Ft |
| MX720063PF | FLANGIA 3 FORI PER MANOMETRI D.63 INOX GLIC. | | | 1 670,00 Ft |
| MX720100PF | FLANGIA 3 FORI PER MANOMETRI D.100 INOX GLIC. | | | 2 260,00 Ft |
| | | | | Nettó lista ár |
| MXX826314099R | VUOTOM.-1 A 0 D.63 R.1/4 GLI.INOX | CL.1.6 | Full INOX, alsó csatlakozású, csillapított | 15 570,00 Ft |
| MXX826314206R | MAN. D.63 0-0,6 R.1/4INOX | CL.1.6 | Full INOX, alsó csatlakozású | 15 570,00 Ft |
| MXX826314001R | MAN. D.63 0-1 R.1/4INOX | CL.1.6 | Full INOX, alsó csatlakozású | 15 570,00 Ft |
| MXX826314106R | MAN. D.63 0-1,6 R.1/4INOX | CL.1.6 | Full INOX, alsó csatlakozású | 15 570,00 Ft |
| MXX826314205R | MAN. D.63 0-2,5 R.1/4INOX | CL.1.6 | Full INOX, alsó csatlakozású | 14 620,00 Ft |
| MXX826314004R | MAN. D.63 0-4 R.1/4INOX | CL.1.6 | Full INOX, alsó csatlakozású | 14 620,00 Ft |
| MXX826314006R | MAN. D.63 0-6 R.1/4INOX | CL.1.6 | Full INOX, alsó csatlakozású | 14 620,00 Ft |
| MXX826314010R | MAN. D.63 0-10 R.1/4INOX | CL.1.6 | Full INOX, alsó csatlakozású | 14 620,00 Ft |
| MXX826314016R | MAN. D.63 0-16 R.1/4INOX | CL.1.6 | Full INOX, alsó csatlakozású | 14 620,00 Ft |
| MXX826314025R | MAN. D.63 0-25 R.1/4INOX | CL.1.6 | Full INOX, alsó csatlakozású | 14 620,00 Ft |
| MXX826314040R | MAN. D.63 0-40 R.1/4INOX | CL.1.6 | Full INOX, alsó csatlakozású | 15 570,00 Ft |
| MXX826314060R | MAN. D.63 0-60 R.1/4INOX | CL.1.6 | Full INOX, alsó csatlakozású | 15 570,00 Ft |
| MXX826314100R | MAN. D.63 0-100 R.1/4INOX | CL.1.6 | Full INOX, alsó csatlakozású | 15 570,00 Ft |
| MXX826314160R | MAN. D.63 0-160 R.1/4INOX | CL.1.6 | Full INOX, alsó csatlakozású | 15 570,00 Ft |
| MXX826314250R | MAN. D.63 0-250 R.1/4INOX | CL.1.6 | Full INOX, alsó csatlakozású | 15 570,00 Ft |
| MXX826314400R | MAN. D.63 0-400 R.1/4INOX | CL.1.6 | Full INOX, alsó csatlakozású | 15 570,00 Ft |
| MXX826314600R | MAN. D.63 0-600 R.1/4INOX | CL.1.6 | Full INOX, alsó csatlakozású | 15 570,00 Ft |
| MXX821012099R | VUOTOM.-1 A 0 D.100 R.1/2 GLI.INOX | CL.1.0 | Full INOX, alsó csatlakozású, csillapított | 25 550,00 Ft |
| MXX821012115R | MANOVUOTOM.-1 A +1,5 D.100 R.1/2 INOX | CL.1.0 | Full INOX, alsó csatlakozású | 25 550,00 Ft |
| MXX821012903R | MANOVUOTOM.-1 A +3 D.100 R.1/2 INOX | CL.1.0 | Full INOX, alsó csatlakozású | 25 550,00 Ft |
| MXX821012905R | MANOVUOTOM.-1 A +5 D.100 R.1/2 INOX | CL.1.0 | Full INOX, alsó csatlakozású | 25 550,00 Ft |
| MXX821012909R | MANOVUOTOM.-1 A +9 D.100 R.1/2 INOX | CL.1.0 | Full INOX, alsó csatlakozású | 25 550,00 Ft |
| MXX821012206R | MAN. D.100 0-0,6 R.1/2INOX | CL.1.0 | Full INOX, alsó csatlakozású | 25 550,00 Ft |
| MXX821012001R | MAN. D.100 0-1 R.1/2INOX | CL.1.0 | Full INOX, alsó csatlakozású | 25 550,00 Ft |
| MXX821012106R | MAN. D.100 0-1,6 R.1/2INOX | CL.1.0 | Full INOX, alsó csatlakozású | 25 550,00 Ft |
| MXX821012205R | MAN. D.100 0-2,5 R.1/2INOX | CL.1.0 | Full INOX, alsó csatlakozású | 22 870,00 Ft |
| MXX821012004R | MAN. D.100 0-4 R.1/2INOX | CL.1.0 | Full INOX, alsó csatlakozású | 22 870,00 Ft |
| MXX821012006R | MAN. D.100 0-6 R.1/2INOX | CL.1.0 | Full INOX, alsó csatlakozású | 22 870,00 Ft |
| MXX821012010R | MAN. D.100 0-10 R.1/2INOX | CL.1.0 | Full INOX, alsó csatlakozású | 22 870,00 Ft |
| MXX821012016R | MAN. D.100 0-16 R.1/2INOX | CL.1.0 | Full INOX, alsó csatlakozású | 22 870,00 Ft |
| MXX821012025R | MAN. D.100 0-25 R.1/2INOX | CL.1.0 | Full INOX, alsó csatlakozású | 22 870,00 Ft |
| MXX821012040R | MAN. D.100 0-40 R.1/2INOX | CL.1.0 | Full INOX, alsó csatlakozású | 25 510,00 Ft |
| MXX821012060R | MAN. D.100 0-60 R.1/2INOX | CL.1.0 | Full INOX, alsó csatlakozású | 25 510,00 Ft |
| MXX821012100R | MAN. D.100 0-100 R.1/2INOX | CL.1.0 | Full INOX, alsó csatlakozású | 25 510,00 Ft |
| MXX821012160R | MAN. D.100 0-160 R.1/2INOX | CL.1.0 | Full INOX, alsó csatlakozású | 25 510,00 Ft |
| MXX821012250R | MAN. D.100 0-250 R.1/2INOX | CL.1.0 | Full INOX, alsó csatlakozású | 25 510,00 Ft |
| MXX821012400R | MAN. D.100 0-400 R.1/2INOX | CL.1.0 | Full INOX, alsó csatlakozású | 25 510,00 Ft |
| MXX821012600R | MAN. D.100 0-600 R.1/2INOX | CL.1.0 | Full INOX, alsó csatlakozású | 25 510,00 Ft |
| MXX821012200R | MAN. D.100 0-1000 R.1/2INOX | CL.1.0 | Full INOX, alsó csatlakozású | 32 880,00 Ft |
| MXX836314099P | VUOTOM.-1 A 0 D.63 P.1/4 INOX | CL.1.6 | Full INOX, hátsó csatlakozású | 20 040,00 Ft |
| MXX836314001P | MAN. D.63 0-1 P.1/4INOX | CL.1.6 | Full INOX, hátsó csatlakozású | 18 040,00 Ft |
| MXX836314106P | MAN. D.63 0-1,6 P.1/4INOX | CL.1.6 | Full INOX, hátsó csatlakozású | 18 040,00 Ft |
| MXX836314205P | MAN. D.63 0-2,5 P.1/4INOX | CL.1.6 | Full INOX, hátsó csatlakozású | 16 850,00 Ft |
| MXX836314004P | MAN. D.63 0-4 P.1/4INOX | CL.1.6 | Full INOX, hátsó csatlakozású | 16 850,00 Ft |
| MXX836314006P | MAN. D.63 0-6 P.1/4INOX | CL.1.6 | Full INOX, hátsó csatlakozású | 16 850,00 Ft |
| MXX836314010P | MAN. D.63 0-10 P.1/4INOX | CL.1.6 | Full INOX, hátsó csatlakozású | 16 850,00 Ft |
| MXX836314016P | MAN. D.63 0-16 P.1/4INOX | CL.1.6 | Full INOX, hátsó csatlakozású | 16 850,00 Ft |
| MXX836314025P | MAN. D.63 0-25 P.1/4INOX | CL.1.6 | Full INOX, hátsó csatlakozású | 16 850,00 Ft |
| MXX836314040P | MAN. D.63 0-40 P.1/4INOX | CL.1.6 | Full INOX, hátsó csatlakozású | 18 040,00 Ft |
| MXX836314060P | MAN. D.63 0-60 P.1/4INOX | CL.1.6 | Full INOX, hátsó csatlakozású | 18 040,00 Ft |
| MXX836314100P | MAN. D.63 0-100 P.1/4INOX | CL.1.6 | Full INOX, hátsó csatlakozású | 18 040,00 Ft |

| | | MANOMÉTEREK | Pontosság | Típus | Nettó lista ár |
|-----------|-------------|--------------------------------------|-----------|--|-----------------------|
| | | MAN. D.63 0-250 P.1/4 GLI. INOX | CL.1.6 | Full INOX, hátsó csatlakozású, csillapított | 19 960,00 Ft |
| | | MAN. D.63 0-400 P.1/4 GLI. INOX | CL.1.6 | Full INOX, hátsó csatlakozású, csillapított | 19 960,00 Ft |
| | | VUOTOM.-1 A 0 D.63 P.1/4 GLI. INOX | CL.1.6 | Full INOX, hátsó csatlakozású, peremes, csill. | 21 930,00 Ft |
| | | MAN. D.63 0-1 P.1/4 GLI. INOX | CL.1.6 | Full INOX, hátsó csatlakozású, peremes, csill. | 21 930,00 Ft |
| | | MAN. D.63 0-1,6 P.1/4 GLI. INOX | CL.1.6 | Full INOX, hátsó csatlakozású, peremes, csill. | 21 930,00 Ft |
| | | MAN. D.63 0-2,5 P.1/4 GLI. INOX | CL.1.6 | Full INOX, hátsó csatlakozású, peremes, csill. | 20 740,00 Ft |
| | | MAN. D.63 0-4 P.1/4 GLI. INOX | CL.1.6 | Full INOX, hátsó csatlakozású, peremes, csill. | 20 740,00 Ft |
| | | MAN. D.63 0-6 P.1/4 GLI. INOX | CL.1.6 | Full INOX, hátsó csatlakozású, peremes, csill. | 20 740,00 Ft |
| | | MAN. D.63 0-10 P.1/4 GLI. INOX | CL.1.6 | Full INOX, hátsó csatlakozású, peremes, csill. | 20 740,00 Ft |
| | | MAN. D.63 0-16 P.1/4 GLI. INOX | CL.1.6 | Full INOX, hátsó csatlakozású, peremes, csill. | 20 740,00 Ft |
| | | MAN. D.63 0-25 P.1/4 GLI. INOX | CL.1.6 | Full INOX, hátsó csatlakozású, peremes, csill. | 20 740,00 Ft |
| | | MAN. D.63 0-40 P.1/4 GLI. INOX | CL.1.6 | Full INOX, hátsó csatlakozású, peremes, csill. | 21 930,00 Ft |
| | | MAN. D.63 0-60 P.1/4 GLI. INOX | CL.1.6 | Full INOX, hátsó csatlakozású, peremes, csill. | 21 930,00 Ft |
| | | MAN. D.63 0-100 P.1/4 GLI. INOX | CL.1.6 | Full INOX, hátsó csatlakozású, peremes, csill. | 21 930,00 Ft |
| | | MAN. D.63 0-160 P.1/4 GLI. INOX | CL.1.6 | Full INOX, hátsó csatlakozású, peremes, csill. | 21 930,00 Ft |
| | | MAN. D.63 0-250 P.1/4 GLI. INOX | CL.1.6 | Full INOX, hátsó csatlakozású, peremes, csill. | 21 930,00 Ft |
| | | MAN. D.63 0-400 P.1/4 GLI. INOX | CL.1.6 | Full INOX, hátsó csatlakozású, peremes, csill. | 21 930,00 Ft |
| | | STAFFA AISI 304 POST.PER MAN.D.50-63 | | | 1 830,00 Ft |
| MN | | | | | Nettó lista ár |
| | | CASSA ABS | | | |
| | NEW | MAN. D.40 0-4 POST. 1/8 CASSA ABS | | | 1 120,00 Ft |
| | NEW | MAN. D.40 0-6 POST. 1/8 CASSA ABS | | | 1 120,00 Ft |
| | NEW | MAN. D.40 0-10 POST. 1/8 CASSA ABS | | | 1 120,00 Ft |
| | NEW | MAN. D.40 0-12 POST. 1/8 CASSA ABS | | | 1 120,00 Ft |
| | NEW | MAN. D.50 0-12 POST. 1/8 CASSA ABS | | | 1 270,00 Ft |
| | | CASSA METALLO | | | |
| | | VUOTOMETRO -1 A 0 D.40 POST.1/8 | CL.2.5 | Fémházas hátsó csatlakozású | 2 260,00 Ft |
| | | MAN. D.40 0-1,0 POST. 1/8 | CL.2.5 | Fémházas hátsó csatlakozású | 2 260,00 Ft |
| | | MAN. D.40 0-1,6 POST. 1/8 | CL.2.5 | Fémházas hátsó csatlakozású | 2 260,00 Ft |
| | | MAN. D.40 0-2,5 POST. 1/8 | CL.2.5 | Fémházas hátsó csatlakozású | 1 250,00 Ft |
| | | MAN. D.40 0-4 POST. 1/8 | CL.2.5 | Fémházas hátsó csatlakozású | 1 250,00 Ft |
| | | MAN. D.40 0-6 POST. 1/8 | CL.2.5 | Fémházas hátsó csatlakozású | 1 250,00 Ft |
| | | MAN. D.40 0-10 POST. 1/8 | CL.2.5 | Fémházas hátsó csatlakozású | 1 250,00 Ft |
| | | MAN. D.40 0-12 POST. 1/8 | CL.2.5 | Fémházas hátsó csatlakozású | 1 250,00 Ft |
| | RAKT | MAN. D.40 0-16 POST. 1/8 | CL.2.5 | Fémházas hátsó csatlakozású | 1 250,00 Ft |
| | | MAN. D.40 0-25 POST. 1/8 | CL.2.5 | Fémházas hátsó csatlakozású | 1 250,00 Ft |
| | | MAN. D.40 0-40 POST. 1/8 | CL.2.5 | Fémházas hátsó csatlakozású | 2 300,00 Ft |
| | | MAN. D.40 0-60 POST. 1/8 | CL.2.5 | Fémházas hátsó csatlakozású | 2 300,00 Ft |
| | | MAN. D.40 0-100 POST. 1/8 | CL.2.5 | Fémházas hátsó csatlakozású | 2 300,00 Ft |
| | | MAN. D.40 0-160 POST. 1/8 | CL.2.5 | Fémházas hátsó csatlakozású | 2 300,00 Ft |
| | | MAN. D.40 0-250 POST. 1/8 | CL.2.5 | Fémházas hátsó csatlakozású | 2 300,00 Ft |
| | | VUOTOMETRO -1 A 0 D.50 POST.1/8 | CL.2.5 | Fémházas hátsó csatlakozású | 2 340,00 Ft |
| | | MAN. D.50 0-1,0 POST. 1/8 | CL.2.5 | Fémházas hátsó csatlakozású | 2 340,00 Ft |
| | | MAN. D.50 0-1,6 POST. 1/8 | CL.2.5 | Fémházas hátsó csatlakozású | 2 340,00 Ft |
| | | MAN. D.50 0-2,5 POST. 1/8 | CL.2.5 | Fémházas hátsó csatlakozású | 1 410,00 Ft |
| | | MAN. D.50 0-4 POST. 1/8 | CL.2.5 | Fémházas hátsó csatlakozású | 1 410,00 Ft |
| | | MAN. D.50 0-6 POST. 1/8 | CL.2.5 | Fémházas hátsó csatlakozású | 1 410,00 Ft |
| | | MAN. D.50 0-10 POST. 1/8 | CL.2.5 | Fémházas hátsó csatlakozású | 1 410,00 Ft |
| | | MAN. D.50 0-12 POST. 1/8 | CL.2.5 | Fémházas hátsó csatlakozású | 1 410,00 Ft |
| | | MAN. D.50 0-16 POST. 1/8 | CL.2.5 | Fémházas hátsó csatlakozású | 1 410,00 Ft |
| | | VUOTOMETRO -1 A 0 D.50 POST.1/4 | CL.2.5 | Fémházas hátsó csatlakozású | 2 340,00 Ft |
| | | MAN. D.50 0-1,0 POST. 1/4 | CL.2.5 | Fémházas hátsó csatlakozású | 2 340,00 Ft |
| | | MAN. D.50 0-1,6 POST. 1/4 | CL.2.5 | Fémházas hátsó csatlakozású | 2 340,00 Ft |
| | | MAN. D.50 0-2,5 POST. 1/4 | CL.2.5 | Fémházas hátsó csatlakozású | 1 410,00 Ft |
| | | MAN. D.50 0-4 POST. 1/4 | CL.2.5 | Fémházas hátsó csatlakozású | 1 410,00 Ft |
| | | MAN. D.50 0-6 POST. 1/4 | CL.2.5 | Fémházas hátsó csatlakozású | 1 410,00 Ft |
| | | MAN. D.50 0-10 POST. 1/4 | CL.2.5 | Fémházas hátsó csatlakozású | 1 410,00 Ft |
| | RAKT | MAN. D.50 0-12 POST. 1/4 | CL.2.5 | Fémházas hátsó csatlakozású | 1 410,00 Ft |
| | RAKT | MAN. D.50 0-16 POST. 1/4 | CL.2.5 | Fémházas hátsó csatlakozású | 1 410,00 Ft |
| | | MAN. D.50 0-25 POST. 1/4 | CL.2.5 | Fémházas hátsó csatlakozású | 1 410,00 Ft |
| | | MAN. D.50 0-40 POST. 1/4 | CL.2.5 | Fémházas hátsó csatlakozású | 2 740,00 Ft |
| | | MAN. D.50 0-100 POST. 1/4 | CL.2.5 | Fémházas hátsó csatlakozású | 2 740,00 Ft |
| | | MAN. D.50 0-315 POST. 1/4 | CL.2.5 | Fémházas hátsó csatlakozású | 2 740,00 Ft |
| | | VUOTOMETRO -1 A 0 D.63 POST.1/4 | CL.2.5 | Fémházas hátsó csatlakozású | 2 530,00 Ft |
| | | MAN. D.63 0-1,0 POST. 1/4 | CL.2.5 | Fémházas hátsó csatlakozású | 2 530,00 Ft |
| | | MAN. D.63 0-1,6 POST. 1/4 | CL.2.5 | Fémházas hátsó csatlakozású | 2 530,00 Ft |
| | | MAN. D.63 0-2,5 POST. 1/4 | CL.2.5 | Fémházas hátsó csatlakozású | 1 610,00 Ft |
| | | MAN. D.63 0-4 POST. 1/4 | CL.2.5 | Fémházas hátsó csatlakozású | 1 610,00 Ft |
| | | MAN. D.63 0-6 POST. 1/4 | CL.2.5 | Fémházas hátsó csatlakozású | 1 610,00 Ft |
| | | MAN. D.63 0-10 POST. 1/4 | CL.2.5 | Fémházas hátsó csatlakozású | 1 610,00 Ft |

| | | MANOMÉTEREK | Pontosság | Típus | Nettó lista ár |
|---------------|------|------------------------------------|-----------|--|----------------|
| MN645014001PS | | MAN. D.50 0-1,0 POST.ST 1/4 | CL.2.5 | Fémházas, hátsó csatl, beépíthető, hátsó rögz. | 4 070,00 Ft |
| MN645014106PS | | MAN. D.50 0-1,6 POST.ST 1/4 | CL.2.5 | Fémházas, hátsó csatl, beépíthető, hátsó rögz. | 4 070,00 Ft |
| MN645014205PS | | MAN. D.50 0-2,5 POST.ST 1/4 | CL.2.5 | Fémházas, hátsó csatl, beépíthető, hátsó rögz. | 3 670,00 Ft |
| MN645014004PS | | MAN. D.50 0-4 POST.ST 1/4 | CL.2.5 | Fémházas, hátsó csatl, beépíthető, hátsó rögz. | 3 670,00 Ft |
| MN645014006PS | | MAN. D.50 0-6 POST.ST 1/4 | CL.2.5 | Fémházas, hátsó csatl, beépíthető, hátsó rögz. | 3 670,00 Ft |
| MN645014010PS | | MAN. D.50 0-10 POST.ST 1/4 | CL.2.5 | Fémházas, hátsó csatl, beépíthető, hátsó rögz. | 3 670,00 Ft |
| MN645014012PS | | MAN. D.50 0-12 POST.ST 1/4 | CL.2.5 | Fémházas, hátsó csatl, beépíthető, hátsó rögz. | 3 670,00 Ft |
| MN645014016PS | | MAN. D.50 0-16 POST.ST 1/4 | CL.2.5 | Fémházas, hátsó csatl, beépíthető, hátsó rögz. | 3 670,00 Ft |
| MN645014025PS | | MAN. D.50 0-25 POST.ST 1/4 | CL.2.5 | Fémházas, hátsó csatl, beépíthető, hátsó rögz. | 3 670,00 Ft |
| MN646314099PS | | VUOTOMETRO -1 A 0 D.63 POST.ST 1/4 | CL.2.5 | Fémházas, hátsó csatl, beépíthető, hátsó rögz. | 4 300,00 Ft |
| MN646314001PS | | MAN. D.63 0-1,0 POST.ST 1/4 | CL.2.5 | Fémházas, hátsó csatl, beépíthető, hátsó rögz. | 4 300,00 Ft |
| MN646314106PS | | MAN. D.63 0-1,6 POST.ST 1/4 | CL.2.5 | Fémházas, hátsó csatl, beépíthető, hátsó rögz. | 4 300,00 Ft |
| MN646314205PS | | MAN. D.63 0-2,5 POST.ST 1/4 | CL.2.5 | Fémházas, hátsó csatl, beépíthető, hátsó rögz. | 3 910,00 Ft |
| MN646314004PS | | MAN. D.63 0-4 POST.ST 1/4 | CL.2.5 | Fémházas, hátsó csatl, beépíthető, hátsó rögz. | 3 910,00 Ft |
| MN646314006PS | | MAN. D.63 0-6 POST.ST 1/4 | CL.2.5 | Fémházas, hátsó csatl, beépíthető, hátsó rögz. | 3 910,00 Ft |
| MN646314010PS | | MAN. D.63 0-10 POST.ST 1/4 | CL.2.5 | Fémházas, hátsó csatl, beépíthető, hátsó rögz. | 3 910,00 Ft |
| MN646314012PS | | MAN. D.63 0-12 POST.ST 1/4 | CL.2.5 | Fémházas, hátsó csatl, beépíthető, hátsó rögz. | 3 910,00 Ft |
| MN646314016PS | | MAN. D.63 0-16 POST.ST 1/4 | CL.2.5 | Fémházas, hátsó csatl, beépíthető, hátsó rögz. | 3 910,00 Ft |
| MN654018099R | | VUOTOMETRO -1 A 0 D.40 RAD.1/8 | CL.2.5 | Fémházas alsó csatlakozású | 2 230,00 Ft |
| MN654018001R | | MAN. D.40 0-1,0 RAD. 1/8 | CL.2.5 | Fémházas alsó csatlakozású | 2 230,00 Ft |
| MN654018106R | | MAN. D.40 0-1,6 RAD. 1/8 | CL.2.5 | Fémházas alsó csatlakozású | 2 230,00 Ft |
| MN654018205R | | MAN. D.40 0-2,5 RAD. 1/8 | CL.2.5 | Fémházas alsó csatlakozású | 1 320,00 Ft |
| MN654018004R | | MAN. D.40 0-4,0 RAD. 1/8 | CL.2.5 | Fémházas alsó csatlakozású | 1 320,00 Ft |
| MN654018006R | | MAN. D.40 0-6,0 RAD. 1/8 | CL.2.5 | Fémházas alsó csatlakozású | 1 320,00 Ft |
| MN654018010R | | MAN. D.40 0-10,0 RAD. 1/8 | CL.2.5 | Fémházas alsó csatlakozású | 1 320,00 Ft |
| MN654018012R | RAKT | MAN. D.40 0-12 RAD. 1/8 | CL.2.5 | Fémházas alsó csatlakozású | 1 320,00 Ft |
| MN654018016R | | MAN. D.40 0-16 RAD. 1/8 | CL.2.5 | Fémházas alsó csatlakozású | 1 320,00 Ft |
| MN654018025R | | MAN. D.40 0-25 RAD. 1/8 | CL.2.5 | Fémházas alsó csatlakozású | 1 320,00 Ft |
| MN654018040R | | MAN. D.40 0-40 RAD. 1/8 | CL.2.5 | Fémházas alsó csatlakozású | 2 260,00 Ft |
| MN654018060R | | MAN. D.40 0-60 RAD. 1/8 | CL.2.5 | Fémházas alsó csatlakozású | 2 260,00 Ft |
| MN654018100R | | MAN. D.40 0-100 RAD. 1/8 | CL.2.5 | Fémházas alsó csatlakozású | 2 260,00 Ft |
| MN654018160R | | MAN. D.40 0-160 RAD. 1/8 | CL.2.5 | Fémházas alsó csatlakozású | 2 260,00 Ft |
| MN654018250R | | MAN. D.40 0-250 RAD. 1/8 | CL.2.5 | Fémházas alsó csatlakozású | 2 260,00 Ft |
| MN654018315R | | MAN. D.40 0-315 RAD. 1/8 | CL.2.5 | Fémházas alsó csatlakozású | 2 260,00 Ft |
| MN655014099R | | VUOTOMETRO -1 A 0 D.50 RAD.1/4 | CL.2.5 | Fémházas alsó csatlakozású | 2 300,00 Ft |
| MN655014001R | | MAN. D.50 0-1,0 RAD. 1/4 | CL.2.5 | Fémházas alsó csatlakozású | 2 300,00 Ft |
| MN655014106R | | MAN. D.50 0-1,6 RAD. 1/4 | CL.2.5 | Fémházas alsó csatlakozású | 2 300,00 Ft |
| MN655014205R | | MAN. D.50 0-2,5 RAD. 1/4 | CL.2.5 | Fémházas alsó csatlakozású | 1 410,00 Ft |
| MN655014004R | | MAN. D.50 0-4,0 RAD. 1/4 | CL.2.5 | Fémházas alsó csatlakozású | 1 410,00 Ft |
| MN655014006R | | MAN. D.50 0-6,0 RAD. 1/4 | CL.2.5 | Fémházas alsó csatlakozású | 1 410,00 Ft |
| MN655014010R | | MAN. D.50 0-10,0 RAD. 1/4 | CL.2.5 | Fémházas alsó csatlakozású | 1 410,00 Ft |
| MN655014012R | | MAN. D.50 0-12 RAD. 1/4 | CL.2.5 | Fémházas alsó csatlakozású | 1 410,00 Ft |
| MN655018012R | | MAN. D.50 0-12 RAD. 1/8 | CL.2.5 | Fémházas alsó csatlakozású | 1 410,00 Ft |
| MN655014016R | RAKT | MAN. D.50 0-16 RAD. 1/4 | CL.2.5 | Fémházas alsó csatlakozású | 1 410,00 Ft |
| MN655014025R | | MAN. D.50 0-25 RAD. 1/4 | CL.2.5 | Fémházas alsó csatlakozású | 1 410,00 Ft |
| MN655014040R | | MAN. D.50 0-40 RAD. 1/4 | CL.2.5 | Fémházas alsó csatlakozású | 2 340,00 Ft |
| MN655014060R | | MAN. D.50 0-60 RAD. 1/4 | CL.2.5 | Fémházas alsó csatlakozású | 2 340,00 Ft |
| MN655014100R | | MAN. D.50 0-100 RAD. 1/4 | CL.2.5 | Fémházas alsó csatlakozású | 2 340,00 Ft |
| MN655014160R | | MAN. D.50 0-160 RAD. 1/4 | CL.2.5 | Fémházas alsó csatlakozású | 2 340,00 Ft |
| MN655014250R | | MAN. D.50 0-250 RAD. 1/4 | CL.2.5 | Fémházas alsó csatlakozású | 2 340,00 Ft |
| MN655014315R | | MAN. D.50 0-315 RAD. 1/4 | CL.2.5 | Fémházas alsó csatlakozású | 2 340,00 Ft |
| MN655014400R | | MAN. D.50 0-400 RAD. 1/4 | CL.2.5 | Fémházas alsó csatlakozású | 2 340,00 Ft |
| MN656314099R | | VUOTOMETRO -1 A 0 D.63 RAD.1/4 | CL.1.6 | Fémházas alsó csatlakozású | 2 490,00 Ft |
| MN656314066R | | MAN. D.63 0-0,6 RAD. 1/4 | CL.1.6 | Fémházas alsó csatlakozású | 3 560,00 Ft |
| MN656314001R | | MAN. D.63 0-1,0 RAD. 1/4 | CL.1.6 | Fémházas alsó csatlakozású | 2 490,00 Ft |
| MN656314106R | | MAN. D.63 0-1,6 RAD. 1/4 | CL.1.6 | Fémházas alsó csatlakozású | 2 490,00 Ft |
| MN656314205R | | MAN. D.63 0-2,5 RAD. 1/4 | CL.1.6 | Fémházas alsó csatlakozású | 1 610,00 Ft |
| MN656314004R | | MAN. D.63 0-4,0 RAD. 1/4 | CL.1.6 | Fémházas alsó csatlakozású | 1 610,00 Ft |
| MN656314006R | | MAN. D.63 0-6 RAD. 1/4 | CL.1.6 | Fémházas alsó csatlakozású | 1 610,00 Ft |
| MN656314010R | | MAN. D.63 0-10 RAD. 1/4 | CL.1.6 | Fémházas alsó csatlakozású | 1 610,00 Ft |
| MN656314012R | RAKT | MAN. D.63 0-12 RAD. 1/4 | CL.1.6 | Fémházas alsó csatlakozású | 1 610,00 Ft |
| MN656314016R | RAKT | MAN. D.63 0-16 RAD. 1/4 | CL.1.6 | Fémházas alsó csatlakozású | 1 610,00 Ft |
| MN656314025R | | MAN. D.63 0-25 RAD. 1/4 | CL.1.6 | Fémházas alsó csatlakozású | 1 610,00 Ft |
| MN656314040R | | MAN. D.63 0-40 RAD. 1/4 | CL.1.6 | Fémházas alsó csatlakozású | 2 530,00 Ft |
| MN656314060R | | MAN. D.63 0-60 RAD. 1/4 | CL.1.6 | Fémházas alsó csatlakozású | 2 530,00 Ft |
| MN656314100R | | MAN. D.63 0-100 RAD. 1/4 | CL.1.6 | Fémházas alsó csatlakozású | 2 530,00 Ft |
| MN656314160R | | MAN. D.63 0-160 RAD. 1/4 | CL.1.6 | Fémházas alsó csatlakozású | 2 530,00 Ft |
| MN656314250R | | MAN. D.63 0-250 RAD. 1/4 | CL.1.6 | Fémházas alsó csatlakozású | 2 530,00 Ft |
| MN656314315R | | MAN. D.63 0-315 RAD. 1/4 | CL.1.6 | Fémházas alsó csatlakozású | 2 530,00 Ft |
| MN656314400R | | MAN. D.63 0-400 RAD. 1/4 | CL.1.6 | Fémházas alsó csatlakozású | 2 530,00 Ft |

| | MANOMÉTEREK | Pontosság | Típus | Nettó lista ár |
|--------------|---------------------------------|-----------|----------------------------|----------------|
| MN658038099R | VUOTOMETRO -1 A 0 D.80 RAD.3/8 | CL.1.6 | Fémházas alsó csatlakozású | 5 980,00 Ft |
| MN658038205R | MAN. D.80 0-2,5 RAD. 3/8 | CL.1.6 | Fémházas alsó csatlakozású | 5 090,00 Ft |
| MN658038004R | MAN. D.80 0-4,0 RAD. 3/8 | CL.1.6 | Fémházas alsó csatlakozású | 5 090,00 Ft |
| MN658038006R | MAN. D.80 0-6 RAD. 3/8 | CL.1.6 | Fémházas alsó csatlakozású | 5 090,00 Ft |
| MN658038010R | MAN. D.80 0-10 RAD. 3/8 | CL.1.6 | Fémházas alsó csatlakozású | 5 090,00 Ft |
| MN658038016R | MAN. D.80 0-16 RAD. 3/8 | CL.1.6 | Fémházas alsó csatlakozású | 5 090,00 Ft |
| MN658038025R | MAN. D.80 0-25 RAD. 3/8 | CL.1.6 | Fémházas alsó csatlakozású | 5 090,00 Ft |
| MN651012099R | VUOTOMETRO -1 A 0 D.100 RAD.1/2 | CL.1.6 | Fémházas alsó csatlakozású | 7 240,00 Ft |
| MN651012001R | MAN. D.100 0-1,0 RAD. 1/2 | CL.1.6 | Fémházas alsó csatlakozású | 7 240,00 Ft |
| MN651012106R | MAN. D.100 0-1,6 RAD. 1/2 | CL.1.6 | Fémházas alsó csatlakozású | 7 240,00 Ft |
| MN651012205R | MAN. D.100 0-2,5 RAD. 1/2 | CL.1.6 | Fémházas alsó csatlakozású | 6 190,00 Ft |
| MN651012004R | MAN. D.100 0-4,0 RAD. 1/2 | CL.1.6 | Fémházas alsó csatlakozású | 6 190,00 Ft |
| MN651012006R | MAN. D.100 0-6 RAD. 1/2 | CL.1.6 | Fémházas alsó csatlakozású | 6 190,00 Ft |
| MN651012010R | MAN. D.100 0-10 RAD. 1/2 | CL.1.6 | Fémházas alsó csatlakozású | 6 190,00 Ft |
| MN651012016R | MAN. D.100 0-16 RAD. 1/2 | CL.1.6 | Fémházas alsó csatlakozású | 6 190,00 Ft |
| MN651012025R | MAN. D.100 0-25 RAD. 1/2 | CL.1.6 | Fémházas alsó csatlakozású | 6 190,00 Ft |